

40 MILE LOOP GAPS REPORT

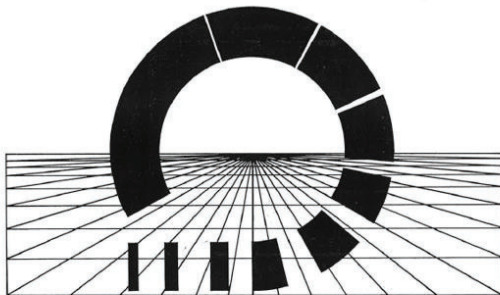
October 21, 2020
Metro Trails Forum

via Zoom

Co-Hosted by
40 Mile Loop Land Trust



40 MILE LOOP OVERVIEW



40 MILE LOOP MASTER PLAN

MAY 1983

PREPARED FOR: 40 MILE LOOP LAND TRUST
PREPARED BY: DAVID EVANS and ASSOCIATES, INC.



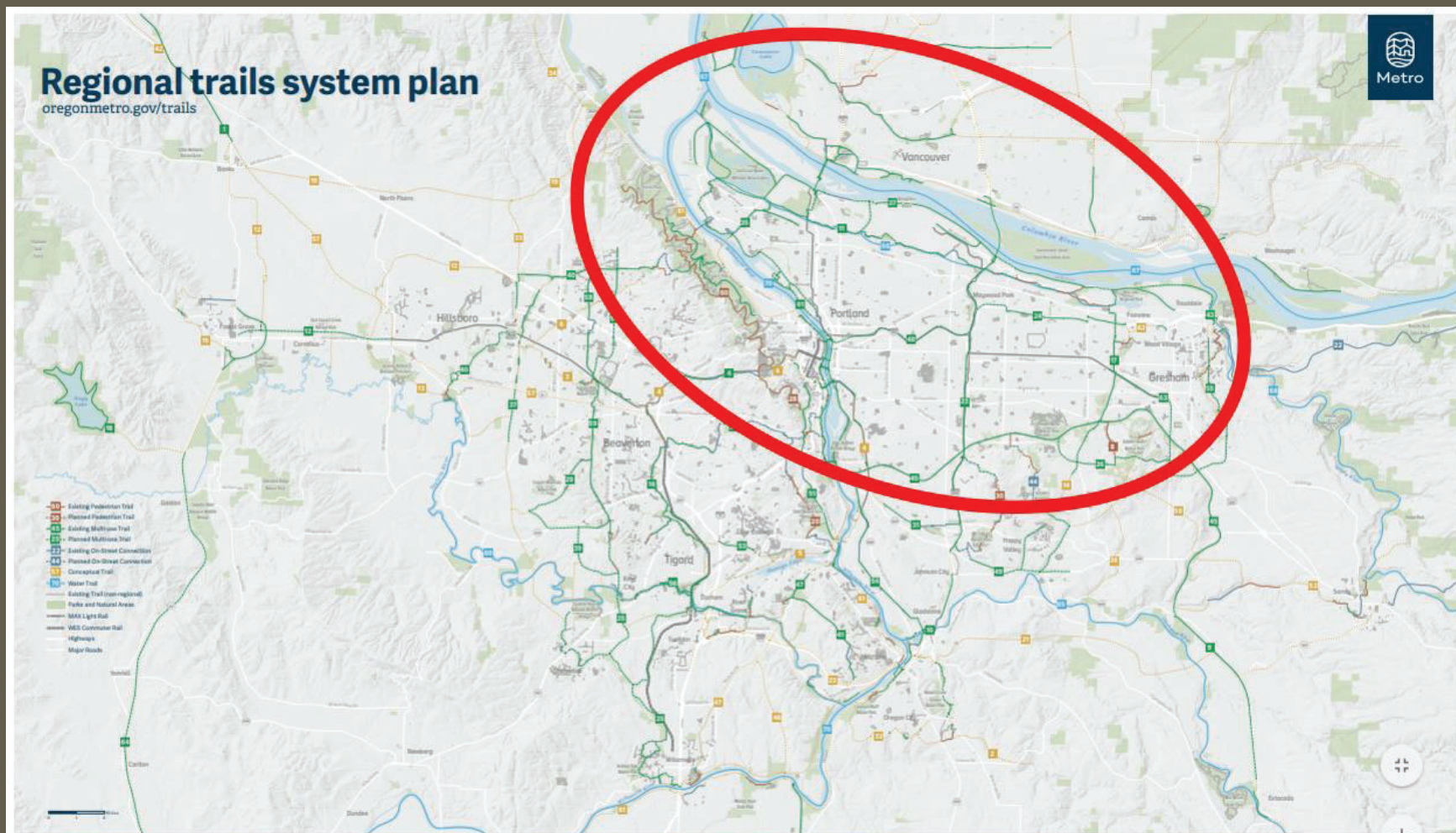
—— Hiking and or Bicycle Trail
—— Bicycle Trail Only



40 Mile Loop Trail Route

Regional trails system plan

oregonmetro.gov/trails



1. Banks-Vernonia Trail
2. Beaver Lake Trail
3. Beaverton Creek Trail
4. Beaverton to Milwaukie Trail
5. Bridgeport to Milwaukie Trail
6. Bronson Creek Trail
7. Butler Buttes Trail
8. Butler Creek Trail

9. Cazadero Trail
10. Clackamas River Greenway
11. Columbia Slough Trail
12. Council Creek Trail
13. Crescent Park Trail
14. East Butte Powerline Trail
15. Emerald Neckline
16. Fanno Creek Trail

17. Gresham-Fairview Trail
18. Hagg Lake Trail
19. Helvetia Trail
20. Hillsdale to Lake Oswego Trail
21. Historic Barlow Road Trail
22. Historic Columbia River Highway
23. I-505 Trail
24. I-84 Trail

25. Ice Age Tongue Trail
26. Kelley Creek Trail
27. Marine Drive Trail
28. Marquam Trail
29. McKernan Creek Trail
30. Mount Scott Trail
31. North Clackamas Greenway
32. Oregon City Loop Trail

33. Oregon Electric Railway Trail
34. Pacific Greenway Trail
35. Peninsula Crossing Trail
36. Red Electric Trail
37. Reedville Trail
38. Richardson Creek Trail
39. River Terrace Trail
40. Rock Creek Trail

41. Rosemont Trail
42. Salmonberry Trail
43. Sandy River Greenway
44. Scouters Mountain Trail
45. Springwater Trail
46. Stafford to Canby Trail
47. Stafford Trail
48. Sullivan's Gulch Trail

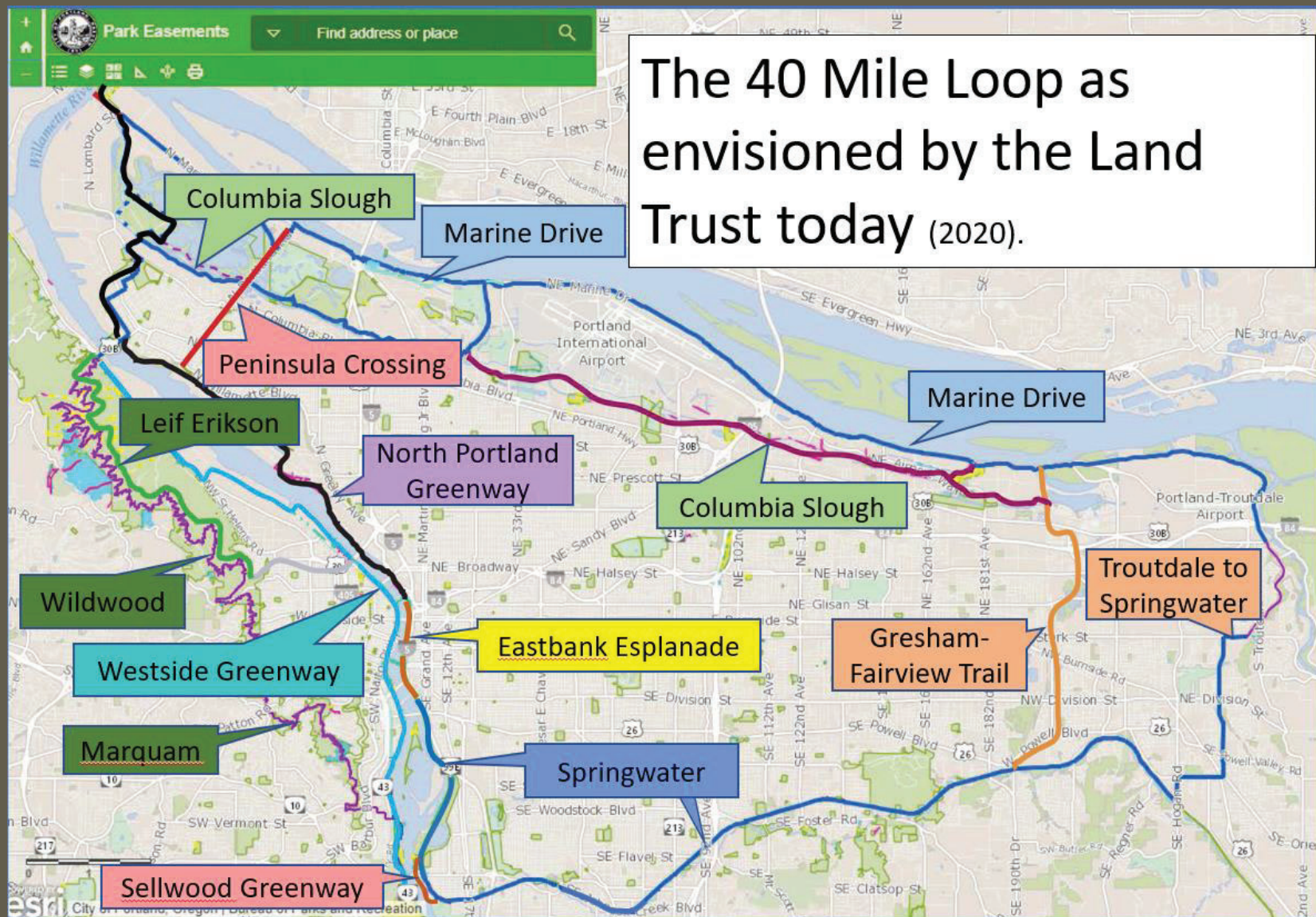
49. Sunrise Corridor Trail
50. Sunshine Valley Trail
51. Terwilliger Trail
52. Tickle Creek Trail
53. Tigard to Lake Oswego Trail
54. Trukey Trail
55. Trousdale to Springwater Trail
56. Tualatin River Greenway

57. Tualatin Valley Trail
58. Waterhouse Trail
59. Westside Trail
60. Wildwood Trail
61. Willamette River Greenway
62. Wood Village to Salish Ponds Trail
63. WyEast Way Path
64. Yamhill Westside Trail

Water Trails

65. Clackamas River Water Trail
66. Columbia Slough Water Trail
67. Lower Columbia River Water Trail
68. Sandy River Water Trail
69. Tualatin River Water Trail
70. Willamette River Water Trail

June 2018



Summary of 40 Mile Loop Sections					
	<i>mode</i>	<i>total miles</i>	<i>done</i>	<i>not done</i>	<i>completion percentage</i>
Ridge-Wildwood-Marquam-Terwill.-Himes-street	ped	28.59	28.44	0.15	99.5%
Thurman-Leif Erikson-Springdale-St. Johns	multi	13.54	13.41	0.13	99.0%
Westside Willamette Greenway	multi	5.9	4.98	0.92	84.4%
Springwater Corridor	multi	20.96	20.56	0.4	98.1%
Eastbank Esplanade	multi	1.98	1.74	0.24	87.9%
North Portland Greenway	multi	13	1	12	7.7%
Columbia Slough Trail	multi / ped	23.28	9.29	13.99	39.9%
Marine Drive Trail	multi	23.08	17.27	5.81	74.8%
Peninsula Crossing Trail	multi	4.09	4.09	0	100.0%
Gresham-Fairview Trail	multi	5.27	3.81	1.46	72.3%
Troutdale to Springwater	multi	6	0	6	0.0%
Sellwood Bridge connections & Sellwood Greenway	multi	2.16	1.22	0.94	56.5%
		147.9	105.81	42.04	71.6%

MARINE DRIVE TRAIL GAPS

City of Portland section

Marine Drive Trail

Conceived in 1972, this is our region's oldest trail.

23 miles from Kelley Point Park in Portland to Depot Park in Troutdale

8 gaps currently exist in Marine Drive Trail.



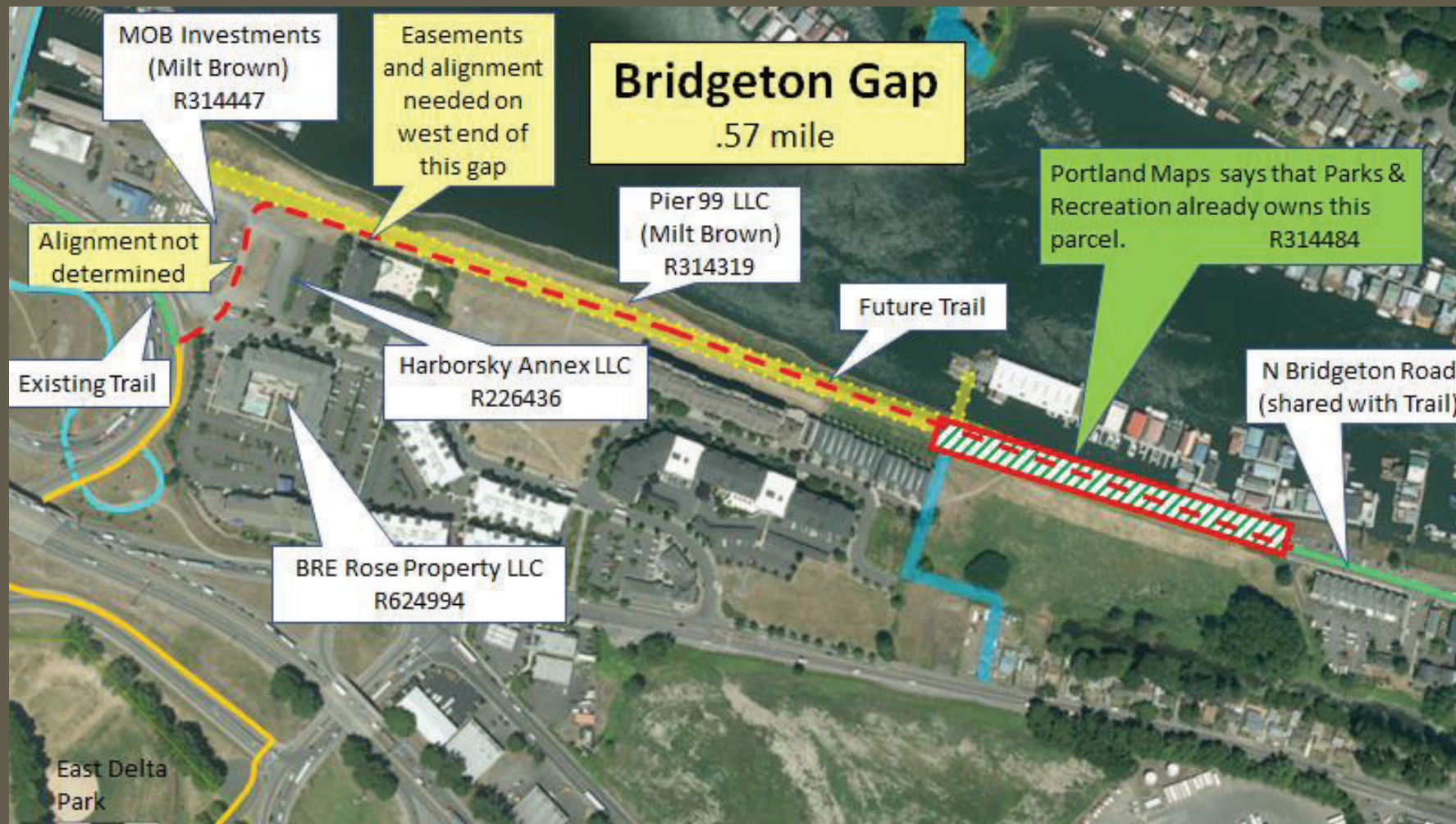
Kelley Point Park Gap

.26 mile

This .26 mile trail connection is
needed to link Marine Drive Trail
to existing Kelley Point Park trails.

0 300 600ft

esri Bureau of Parks and Recreation | City of Portland, Oregon





I-205 Pathway

Parkrose Gap

I-205 to NE 122nd
.88 mile

Metro parcel
R317146

Metro parcel
R317132

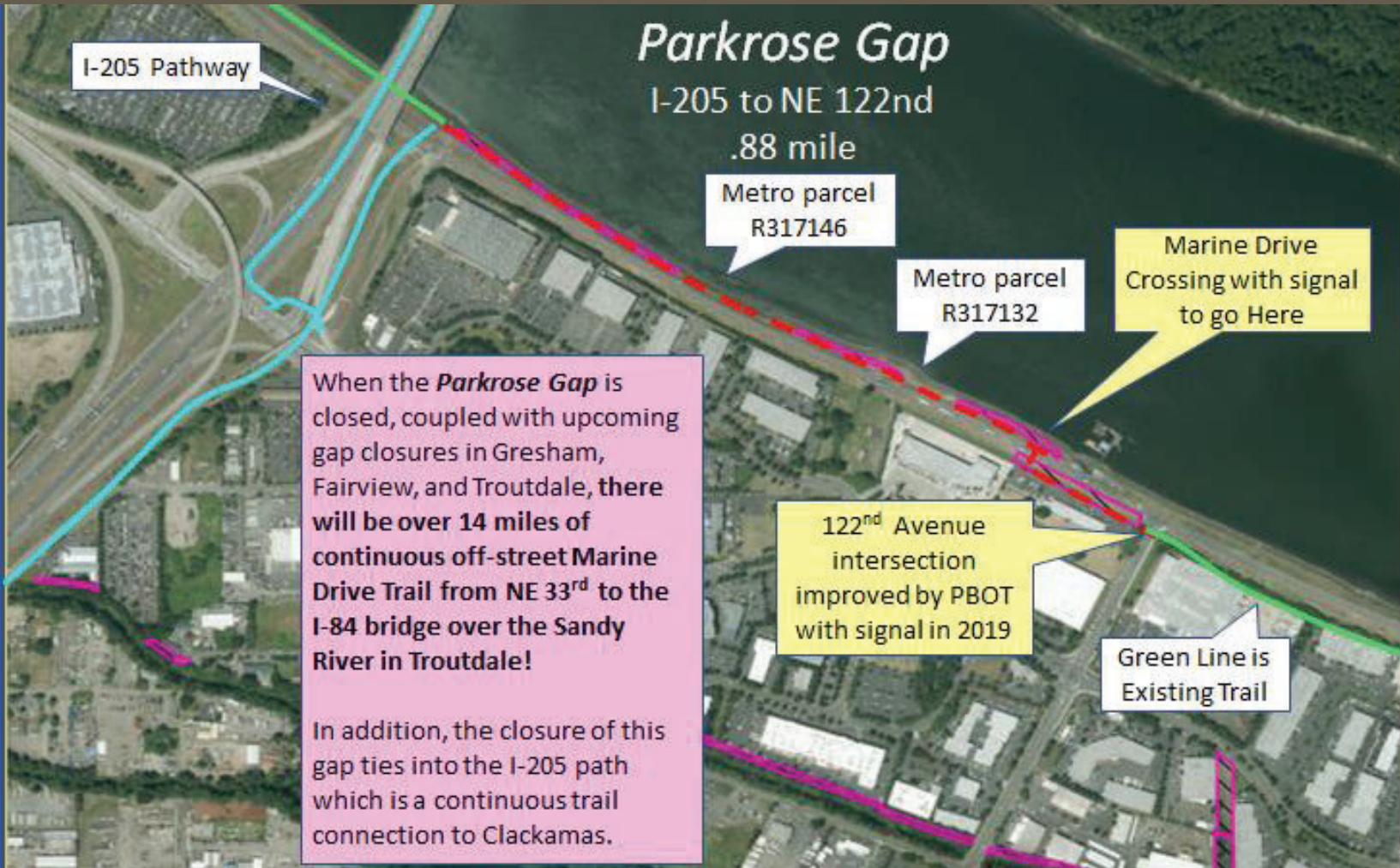
Marine Drive
Crossing with signal
to go Here

When the *Parkrose Gap* is closed, coupled with upcoming gap closures in Gresham, Fairview, and Troutdale, there will be over 14 miles of continuous off-street Marine Drive Trail from NE 33rd to the I-84 bridge over the Sandy River in Troutdale!

In addition, the closure of this gap ties into the I-205 path which is a continuous trail connection to Clackamas.

122nd Avenue
intersection
improved by PBOT
with signal in 2019

Green Line is
Existing Trail



A Celebratory Note for Marine Drive Trail improvements in 2019

- A user activated signal was added with other improvements at the intersection of Marine Drive and 122nd.
- A user activated signal was added at a Marine Drive crossing at NE 140th.
- A user activated signal was also added at a Marine Drive crossing at NE 178th.
- The Wilkes Gap was closed with the completion of over 1,000 linear feet of Marine Drive Trail near the Portland / Gresham boundary.

Thank you Portland Parks & Recreation and Portland Bureau of Transportation for these improvements!

MARINE DRIVE TRAIL GAPS

City of Gresham and Blue Lake Park section

Project Details

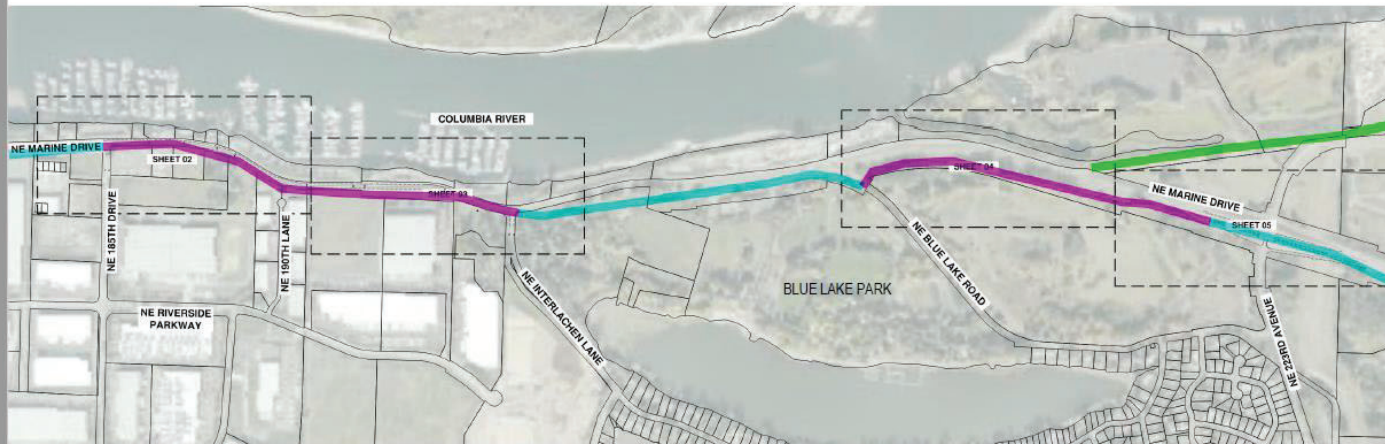
Two trail segments:

- Gresham Gap (NE 185th to NE Interlachen Ln)
- Blue Lake Re-build (NE Blue Lake Rd to NE 223rd)

\$2.85 million, estimated budget

May 2023, estimated completion





Project area:

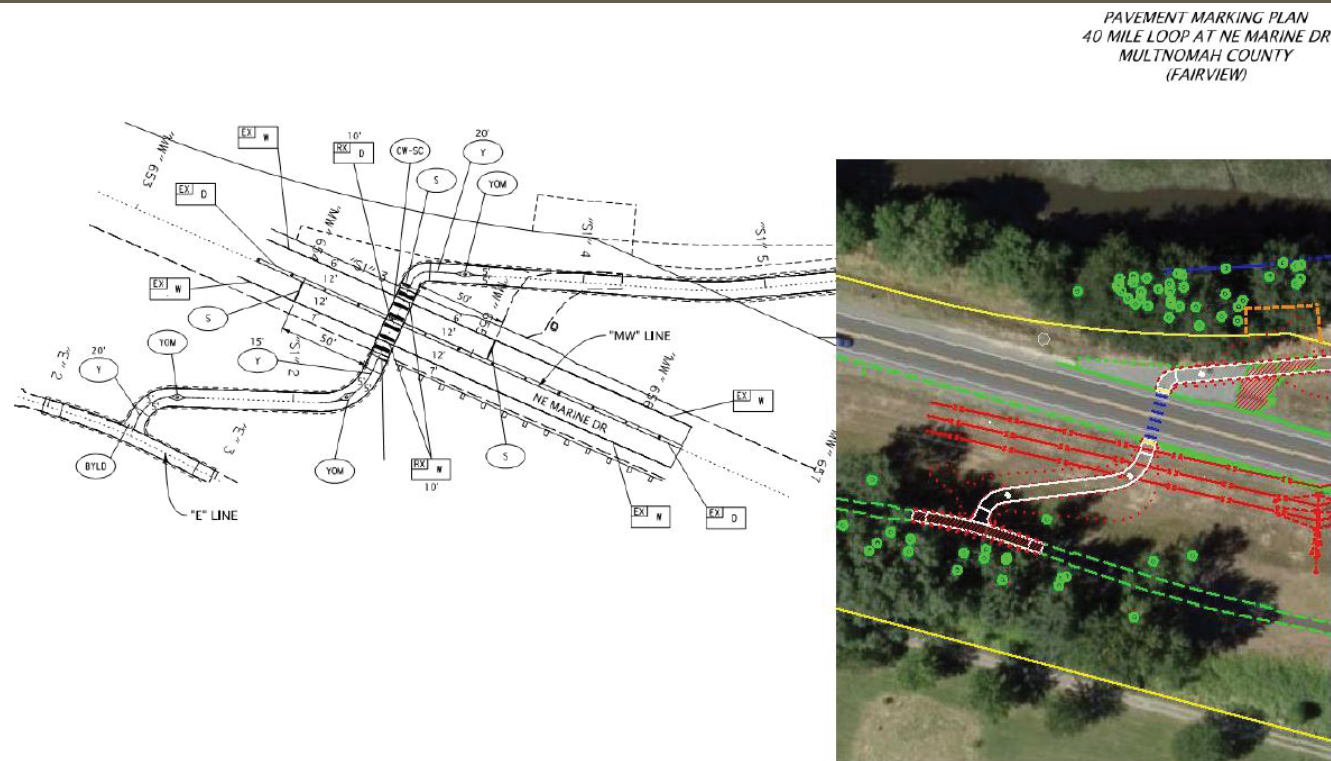
- Blue indicates existing trail segments
- Green represents new Fairview Gap trail segment (currently under construction)
- Pink indicates project scope (2 trail segments)



At NE Interlachen Lane
looking west at site of new
Marine Drive trail segment



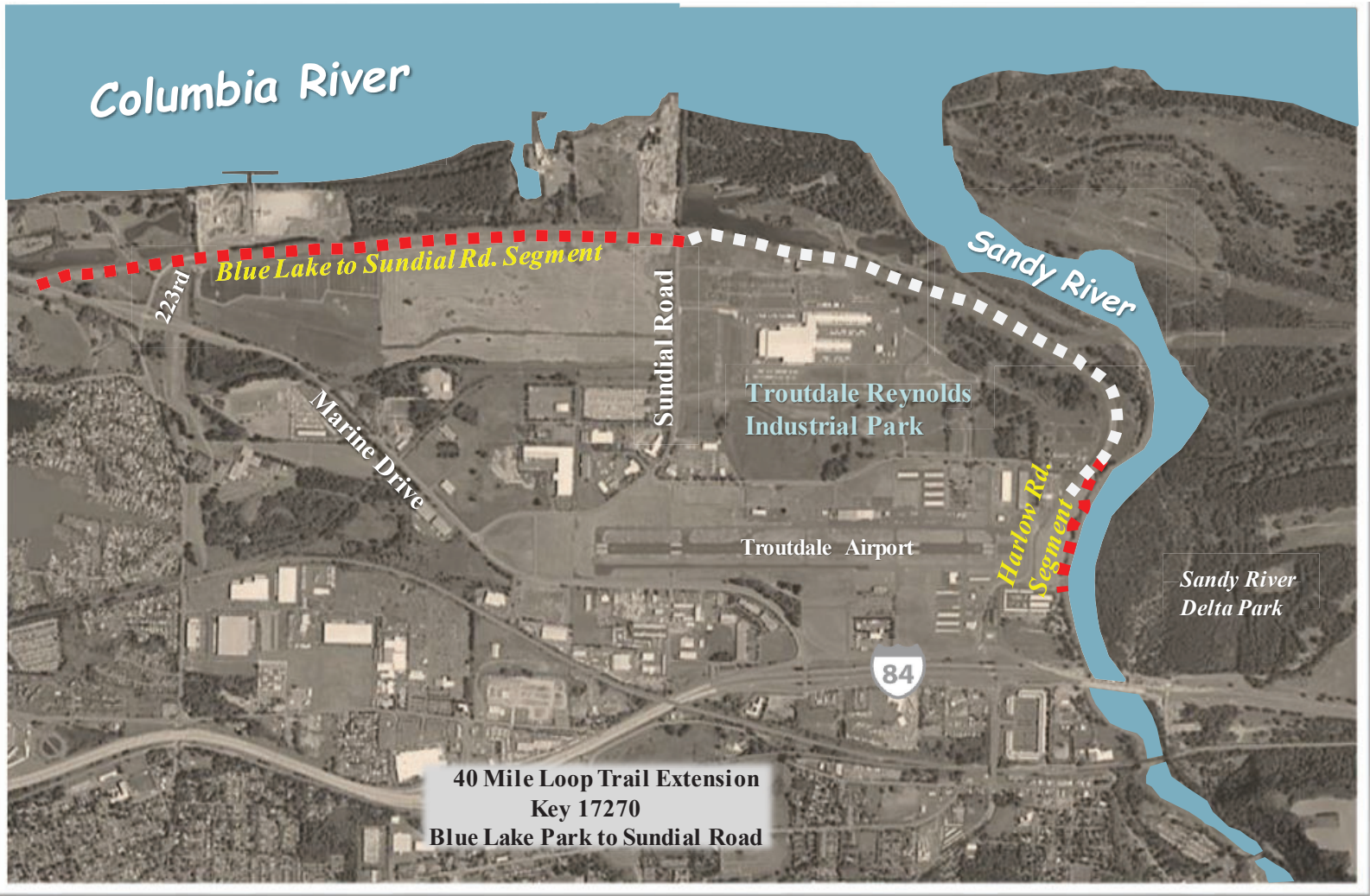
Condition of existing Blue
Lake Park trail segment to be
re-built



The Fairview Gap trail by ODOT & Port of Portland (currently underway) will include a signaled crossing at Marine Drive to connect to Blue Lake Park trail segment.

MARINE DRIVE TRAIL GAP

Fairview to Troutdale section



Blue Lake Park to Sundial Road Segment

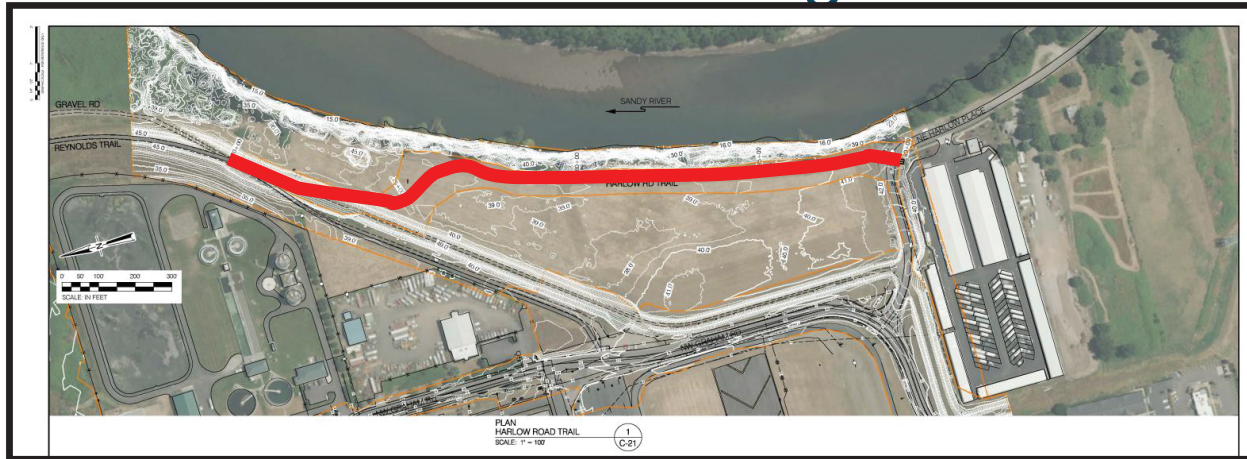
Exhibit A

40 Mile Loop Trail Extension

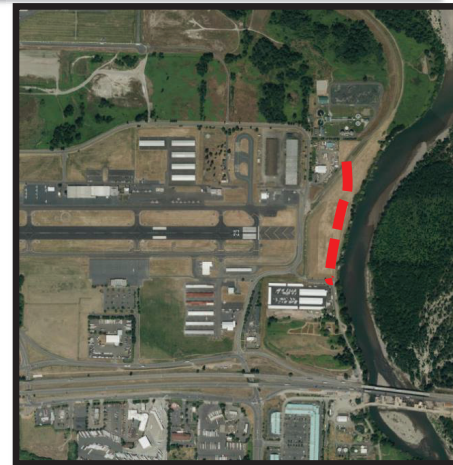


- About 1.6 mile in length
- Connect with path on south side of Marine Drive- use flashing beacon at crossing
- Follow levee- crossings at Chinook Landing, 223rd, Sundial Road
- Connect with existing Reynolds Trail on east side of Sundial Road

Harlow Road Segment



- About 1900 feet in length
- Connect to existing Reynolds Trail
- Drop down on east side of levee
- Tie-in at Harlow Road



SANDY RIVERFRONT

Troutdale's New Connection along the Sandy River

CLOSING GAPS IN TROUTDALE

likely segment name: "**Drovers Trail**"

+/- 1,600 ft (0.3 mile) connection

links trailhead at I-84 bridge to downtown

elevated path underneath the railroad

minimum 12 feet wide paved –
likely wider in some areas

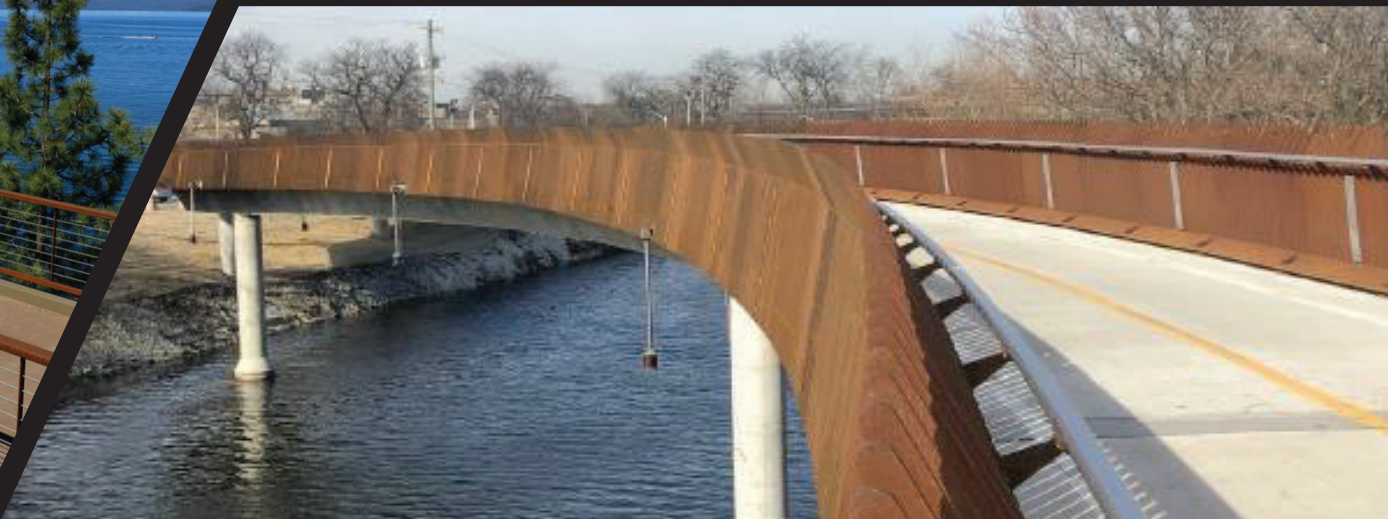
ADA-compliant – max 5% slope

coordination with Gorge Bike Hub project
at future Troutdale Visitor Center
(restrooms, lockers, etc.)

boost to new development at
The Confluence site

future connections within community



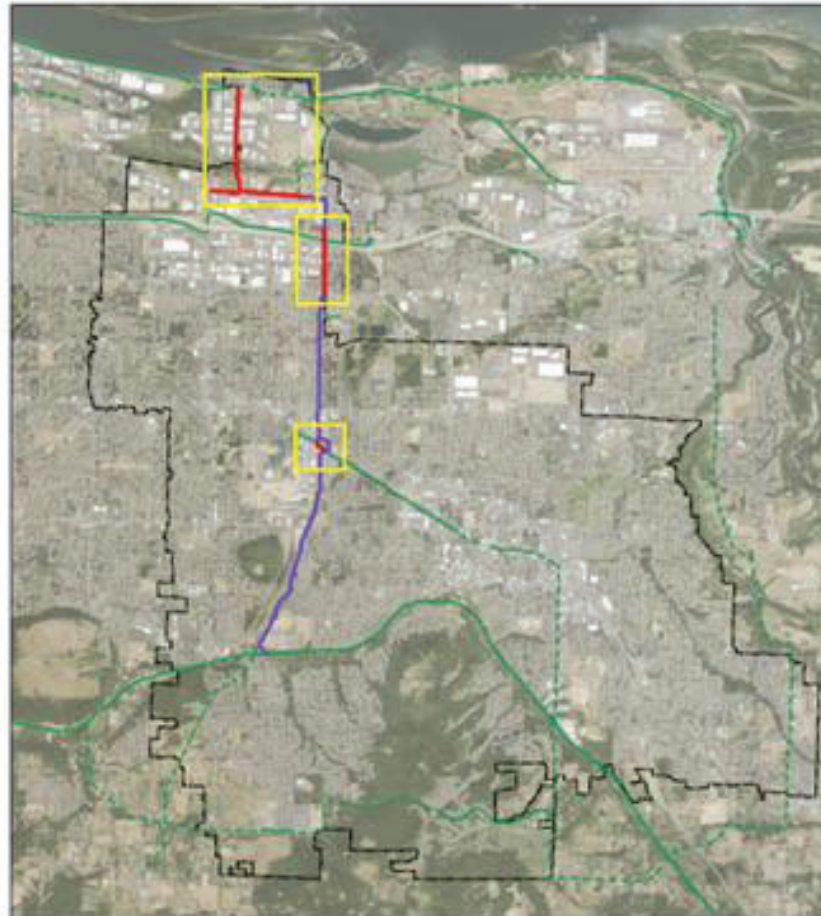


GRESHAM FAIRVIEW TRAIL GAPS

- Wy'East Way to Burnside Crossing
- NE Halsey to NE Sandy
- Wastewater Treatment Plant to Marine Drive

Gresham Fairview Trail

- GFT Complete
- GFT Gap
- Existing Multi-Use Trail
- - - Planned Multi-Use Trail



Gresham Fairview Trail

- GFT Complete
- GFT Gap
- Existing Multi-Use Trail
- - - Planned Multi-Use Trail



Gresham Fairview Trail

201st - .57 mile gap

- GFT Complete
- GFT Gap
- Existing Multi-Use Trail
- - - Planned Multi-Use Trail



Gresham Fairview Trail



Sandy - .56 mile gap
185th - .9 mile gap

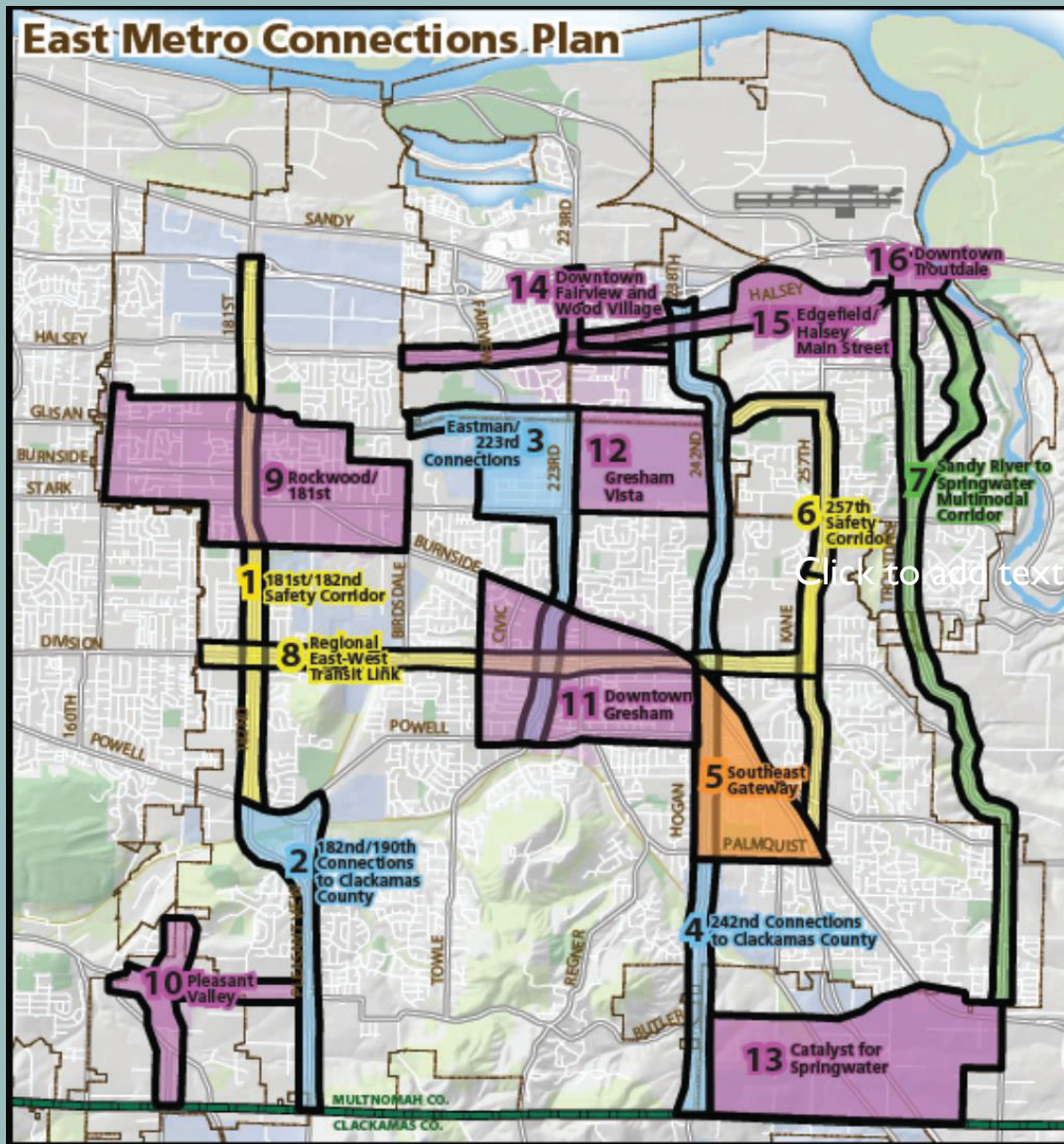
- GFT Complete
- GFT Gap
- Existing Multi-Use Trail
- - - Planned Multi-Use Trail



TROUTDALE TO SPRINGWATER GAP

40-Mile Loop





2012 East Metro Connections Plan

- Sandy River to Springwater Multimodal Corridor identified as priority project



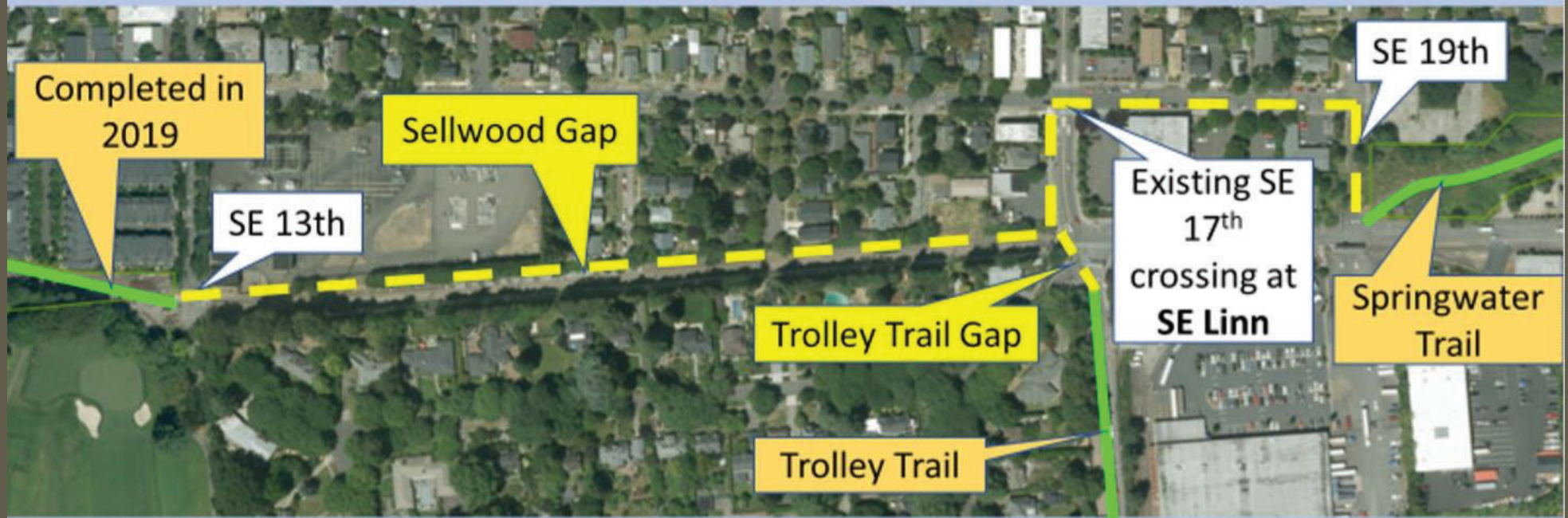
SPRINGWATER TRAIL GAPS

Sellwood Gap

Hosford-Abernethy Gaps

Sellwood Gap from SE 13th to SE 19th

An *alignment*, a partially on-street route, could be done with relatively lower costs and with no additional right-of-way acquisition.





**SE 13th Avenue
& Springwater
Trail**
(viewing
northwest)

This is the east end
of the newest
completed
segment of the
Springwater Trail.



About 150 feet west of
SE 17th and Ochoco –
viewing **east**

In the distance is SE 17th Avenue.

3407 12/11/2017

SE 19th and Ochoco – viewing **northeast**

Just ahead is a ramp connecting to
the Springwater Trail

From this location eastward, the
Springwater Corridor Trail offers
nearly **17 miles** of continuous off-
street trail to the town of Boring,
Oregon.

3418 12/11/2017





The $\frac{1}{4}$ mile on-street link between the Esplanade and the Springwater is shown in yellow. The preferred alignment is along the river in red & purple.



American
Waterways
Properties just
south of Portland
Opera

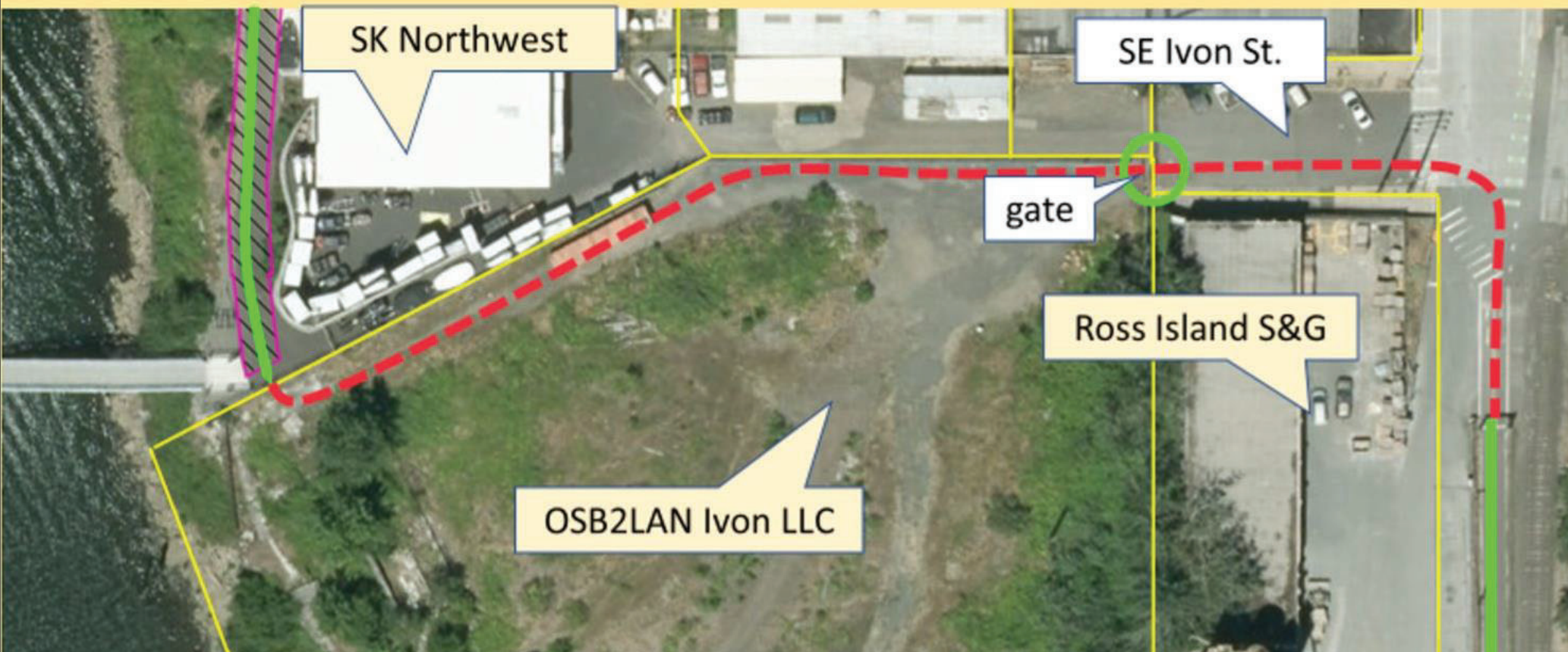
A suggested **long-term**
alignment to occur
when the property
redevelops.



An isolated segment of trail was built in 2009.

An “orphan” trail, this 360 feet long trail is the first piece of a future off-street connection between the Esplanade and the Springwater.

Possible future trail alignment between SK Northwest segment and the Springwater



SELLWOOD GREENWAY GAPS

SELLWOOD GREENWAY TRAIL

- ***Look at this!*** We are so close to having this trail complete
- ***Hidden gem!*** A wonderful asset for the southeast urban neighborhoods of Portland
- ***Continue our investment for great returns!*** This trail connects folks to the Willamette River with a meandering trail.
- ***With small gaps to fill,*** this trail will be so much more accessible and usable.

A

Oaks Amusement Park

Oaks Bottom Undercrossing

Springwater

Sellwood Riverfront Park

Sellwood Park

SE Tacoma St.

B

SE Tacoma St.

Springwater

C

SE Linn St.

Sellwood Greenway Trail

A trail route from the Springwater at Oaks Bottom to the Willamette and back to the Springwater via a stairway up to SE Linn Street.

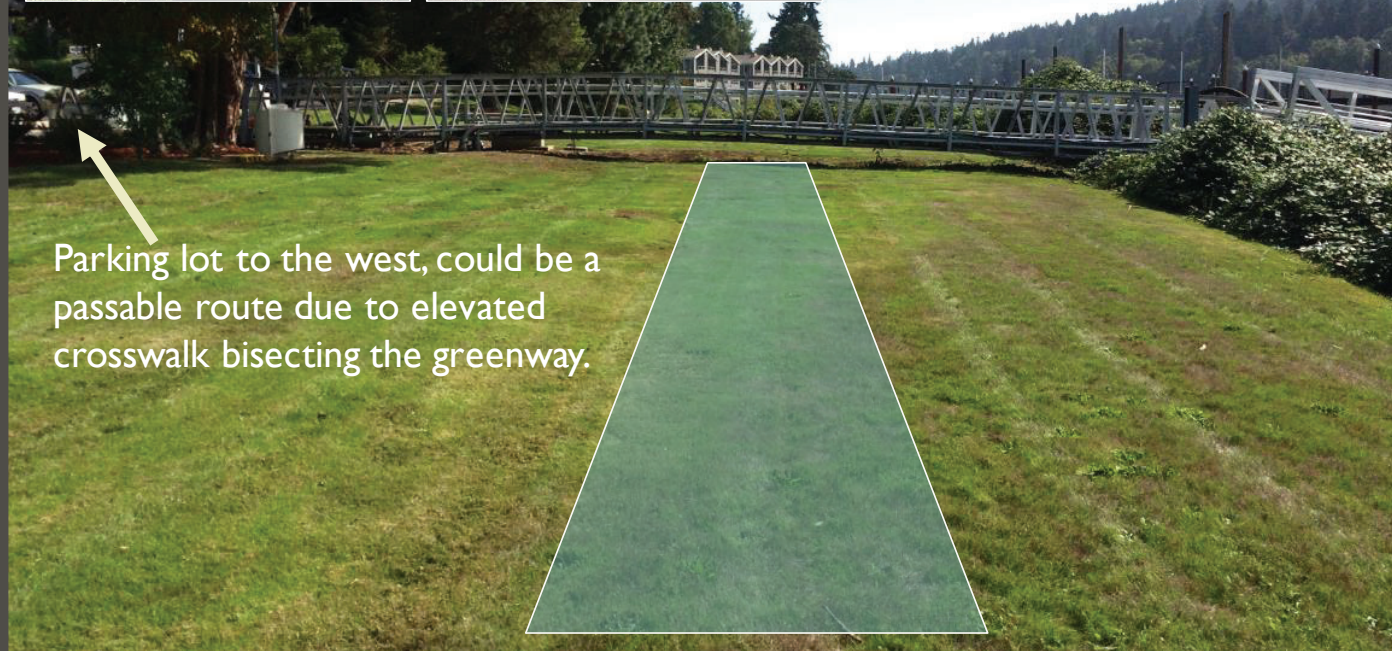
A



Sellwood Greenway Trail

At some point as Oaks Park continues to make improvements a trail alignment such as shown here will be negotiated.

B



Parking lot to the west, could be a passable route due to elevated crosswalk bisecting the greenway.

Sellwood Greenway Trail

The trail dead ends with a fence at Portland Rowing Club.

There is also a crosswalk striking the middle of the greenway.



Sellwood Greenway Trail

Detail view of
the end of SE
Linn Street at
the Willamette
River.

Aerial photo
from Portland
Maps on
9/29/2019.



1. Trail



2. Linn St.

Sellwood Greenway Trail

The trail ends at SE Linn Street with overgrown blackberries. As seen here, trail near river level, then up top at street level.

SOUTHWEST WILLAMETTE GREENWAY GAPS

Zidell Gap

Alamo Manhattan Development Gap



Marquam Bridge

Tillikum Crossing

Zidell Gap. Development of the Zidell Yards Master Plan fell through in 2018. No current movement.

Ross Island Bridge

Completed
S Waterfront Greenway

Alamo Manhattan is developing Block 40 (previously called The Landing).
A separated riverfront trail matches the design of the existing S Waterfront trail.

Completed (to old standards, a few safety concerns remain with tight and blind corners)

SOUTHWEST WILLAMETTE GREENWAY TRAIL: **S WATERFRONT GAPS**

The Zidell gap in the long-planned multi-modal riverfront trail in the middle of the ***South Waterfront section*** is more than 3,000 feet long. It is the longest gap in the **Southwest Willamette Greenway**.

A mostly on-street, multi-modal path through S Waterfront neighborhood is shown in magenta.



Image from Alamo Manhattan Website

According to the website,

The project will also include an extension of the surrounding street grid and the South Waterfront Greenway. The greenway will feature walking trails, lush native landscaping, and an overlook to the river providing a public benefit for the neighborhood and City.

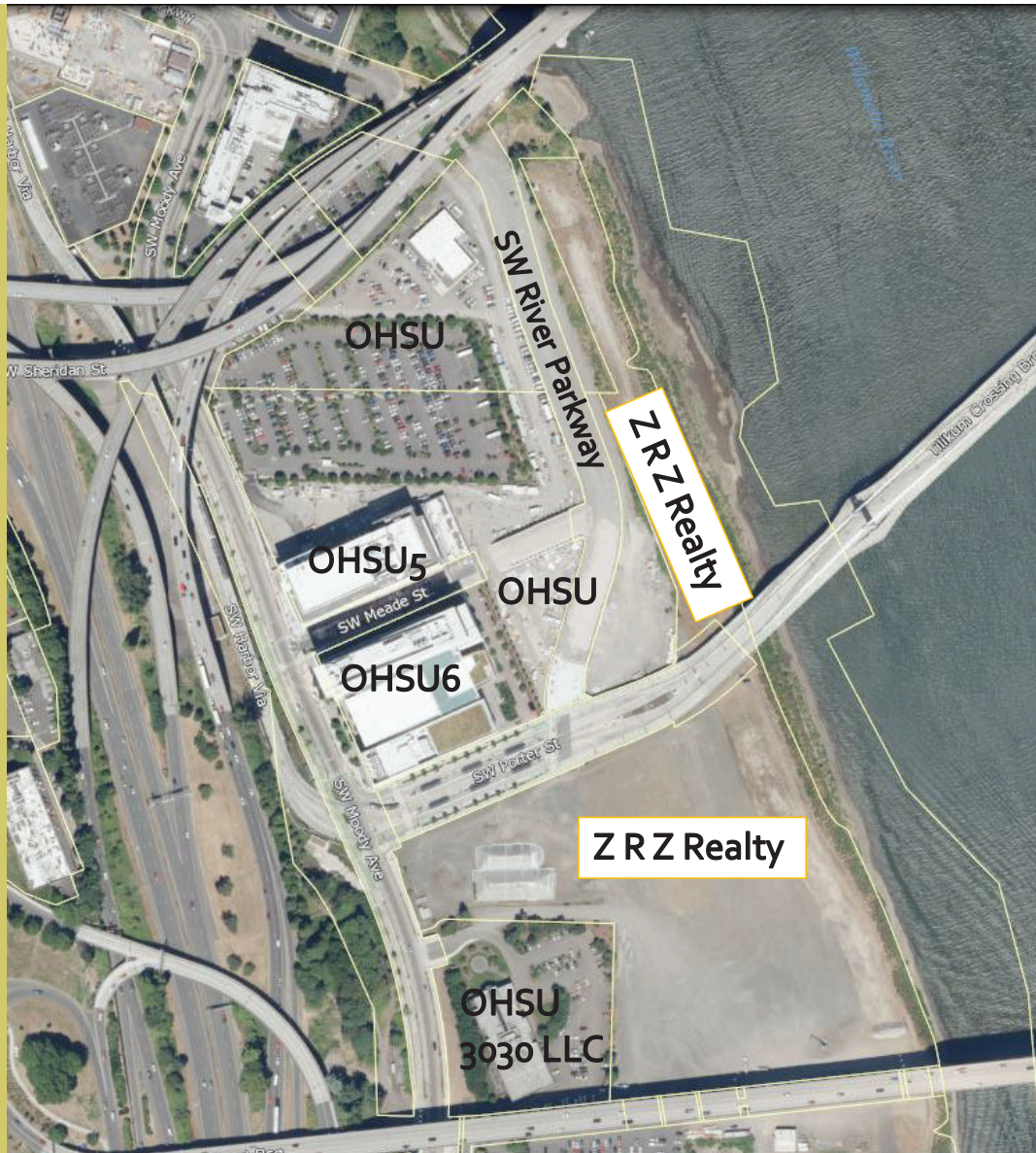
Construction estimated to begin end of 2021.



SOUTHWEST WILLAMETTE GREENWAY TRAIL: **S WATERFRONT GAPS**

The gap in the long-planned multi-modal riverfront trail in the middle of the ***South Waterfront section*** is more than 3,000 feet long. It is the longest gap in the **Southwest Willamette Greenway**.

The partly on-street multi-modal route in this area is shown in yellow. Here the route is well separated from traffic lanes.



Land ownership between the Marquam and Ross Island Bridges

The vast majority of the gap involves one private ownership and redevelopment plans have been put on hold since 2018.

NORTHWEST WILLAMETTE GREENWAY GAP

Centennial Mills Gap

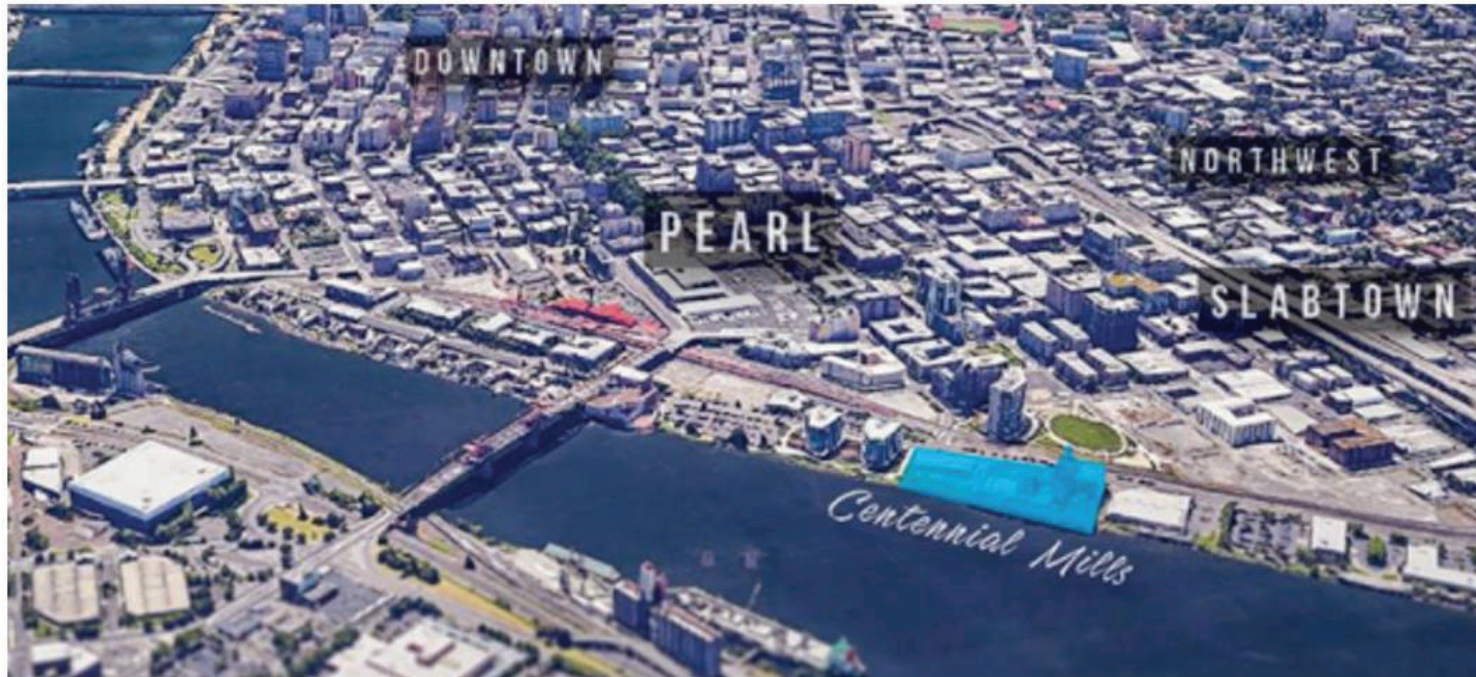
NORTHWEST WILLAMETTE
GREENWAY TRAIL:
**CENTENNIAL MILLS
GAP**

Except for the area shown here, the Greenway Trail is completed from Burnside to Terminal 1.

Gaps exist on a private parcel owned by Summit Properties (~ 375 LF) and on the parcel owned by Prosper Portland (~655 LF).



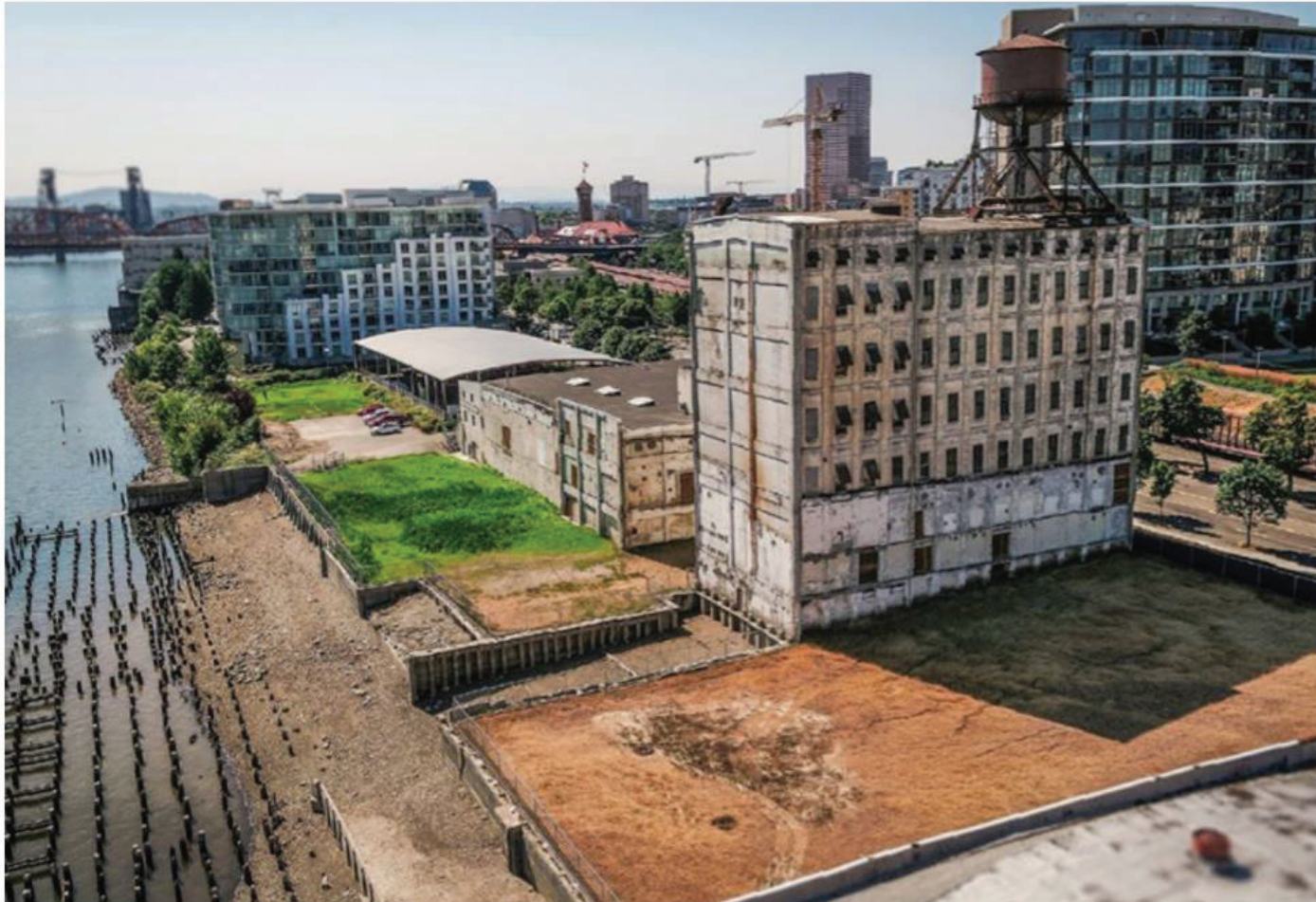
Centennial Mills: Background and Context



Current Site Conditions



Current and immediate next steps



BARBARA WALKER CROSSING

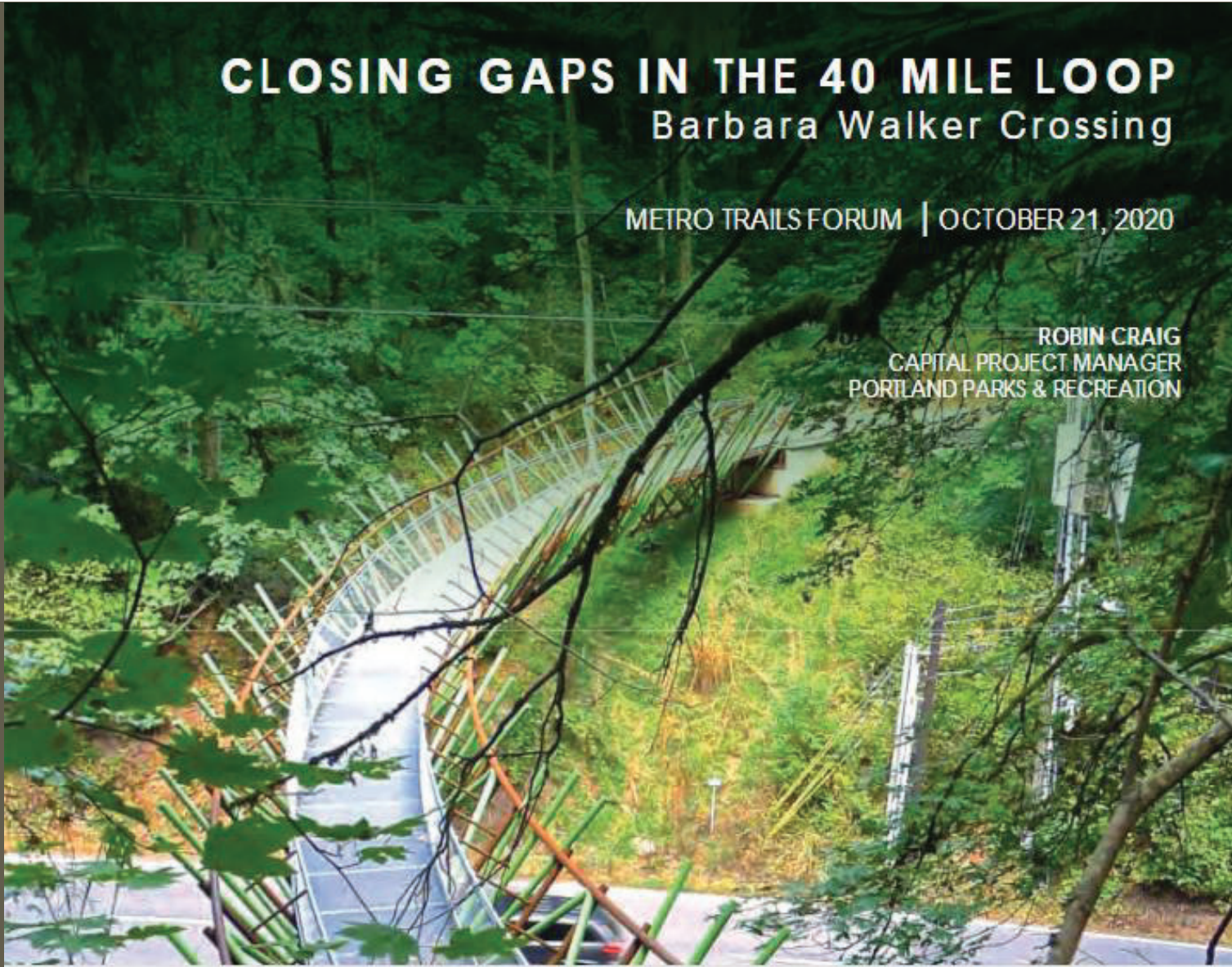
Wildwood Trail crosses over West Burnside!

CLOSING GAPS IN THE 40 MILE LOOP

Barbara Walker Crossing

METRO TRAILS FORUM | OCTOBER 21, 2020

ROBIN CRAIG
CAPITAL PROJECT MANAGER
PORTLAND PARKS & RECREATION



CONTEXT

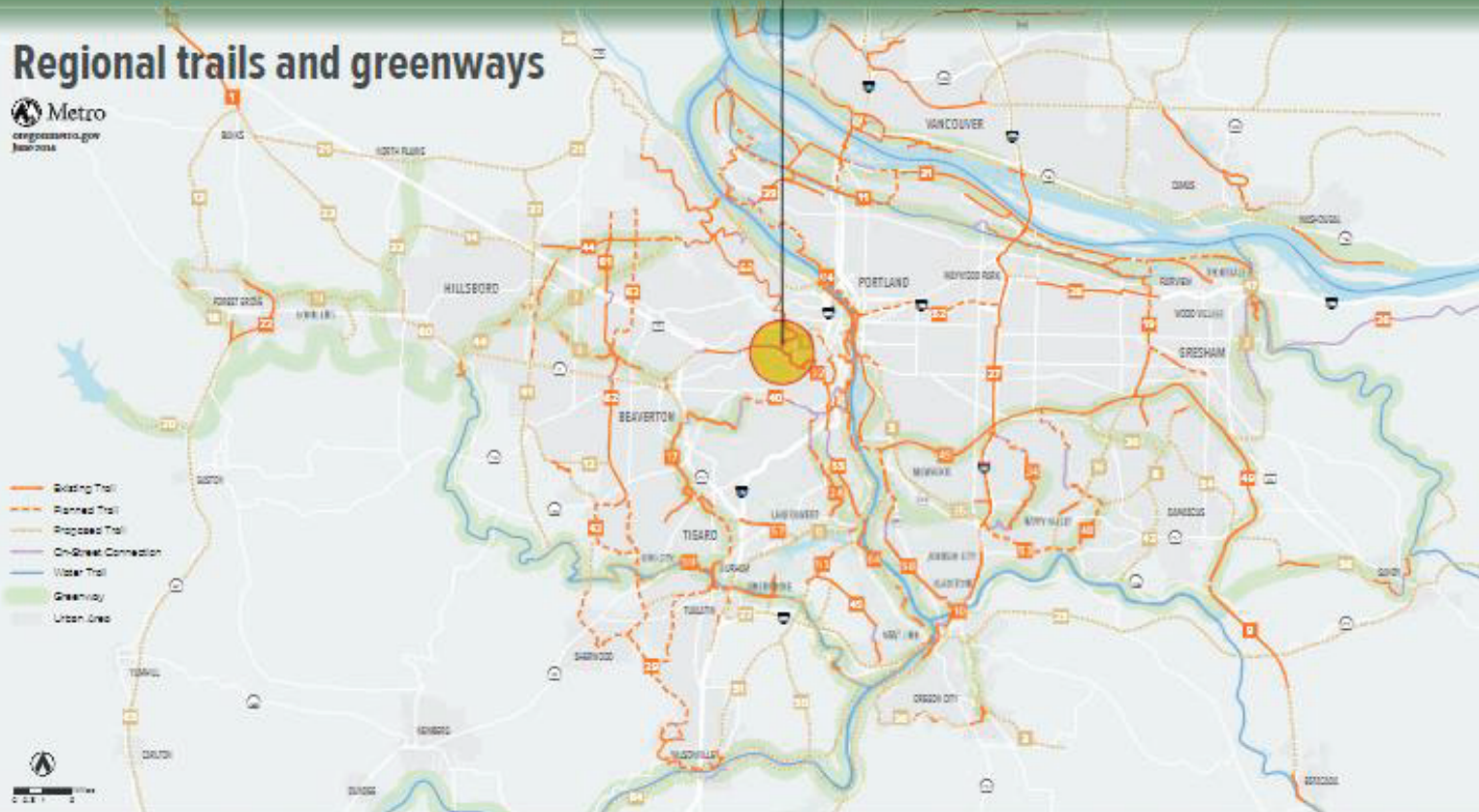
The Wildwood Trail is the iconic City of Portland trail experience. Designated as a National Recreation Trail, it spans 30.2 miles in the urban core of the City of Portland. This distance makes it America's longest forested urban trail.



WILDWOOD TRAIL BRIDGE LOCATION

LOCATION

Regional trails and greenways



- | | | | | | | | | |
|----------------------------------|-------------------------------|--------------------------------|-------------------------------------|-------------------------------|-----------------------------------|--------------------------------|---------------------------------|-------------------------------|
| 1. Barkley/Kerns Trail | 8. Butler Gulch Trail | 15. Cowen Sellenbach Trail** | 22. Highway 47 Trail | 29. Ice Age Tongue Trail | 36. Oregon City Loop Trail | 43. River Terrace Trail | 50. Stafford to Sandy Trail | 57. Trolley Trail |
| 2. Beaver Creek Trail | 9. Cascade Trail | 16. East Butte Powerline Trail | 23. Hillsboro to Barkley Trail | 30. Kasky Creek Trail | 37. Oregon Electric Railway Trail | 44. Rock Creek Trail | 51. Stafford Trail | 58. Tualatin River Greenway |
| 3. Beaver Lake Trail | 10. Clatskanie River Greenway | 17. Ramo Creek Trail | 24. Hillsdale to Lake Oswego Trail* | 31. Marne Drive Trail | 38. Pacific Greenway Trail | 45. Rosemont Trail | 52. Sullivan's Gulch Trail | 59. Tualatin Valley Trail |
| 4. Beaverton Creek Trail* | 11. Columbia Slough Trail | 18. Sells Creek Trail | 25. Historic Barkley Road Trail | 32. Margum Trail | 39. Peninsula Crossing Trail | 46. Salmonberry Corridor Trail | 53. Sunrise Corridor Trail | 60. Warehouse Trail |
| 5. Beaverton to Milvaukie Trail | 12. Cooper Mountain Trail | 19. Gresham-Rainier Trail | 26. Historic Columbia River Highway | 33. McKay Creek Greenway | 40. Red Electric Trail | 47. Sandy River Greenway | 54. Sunshine Valley Trail | 61. Warehouse Trail |
| 6. Bridgeport to Milvaukie Trail | 13. Council Creek Trail | 20. Hogg Lake Trail | 27. +200 Trail | 34. Mount Scott Trail* | 41. Reedville Trail | 48. Scoulers Mountain Trail | 55. Tervilger Trail | 62. Wildwood Trail |
| 7. Brandon Creek Trail | 14. Crescent Park Trail | 21. Halvada Trail | 28. +80 Trail | 35. North Clatskanie Greenway | 42. Richardson Creek Trail | 49. Springwater Trail | 56. Thole Creek Trail | 63. Willamette River Greenway |
| | | | | | | | 59. Tigard to Lake Oswego Trail | 64. Yamhill Greenway Trail |

* Trail information on map is for planning purposes. Trail data is preliminary and subject to change. ** Location on map. Located in Clatskanie County, Oregon.

**WILDWOOD TRAIL
BRIDGE LOCATION**

LOCATION

PITTOCK MANSION

OREGON HOLOCAUST MEMORIAL

PORTLAND JAPANESE GARDEN

INTERNATIONAL ROSE TEST GARDEN

HOYT ARBORETUM

NW BURNSIDE ROAD

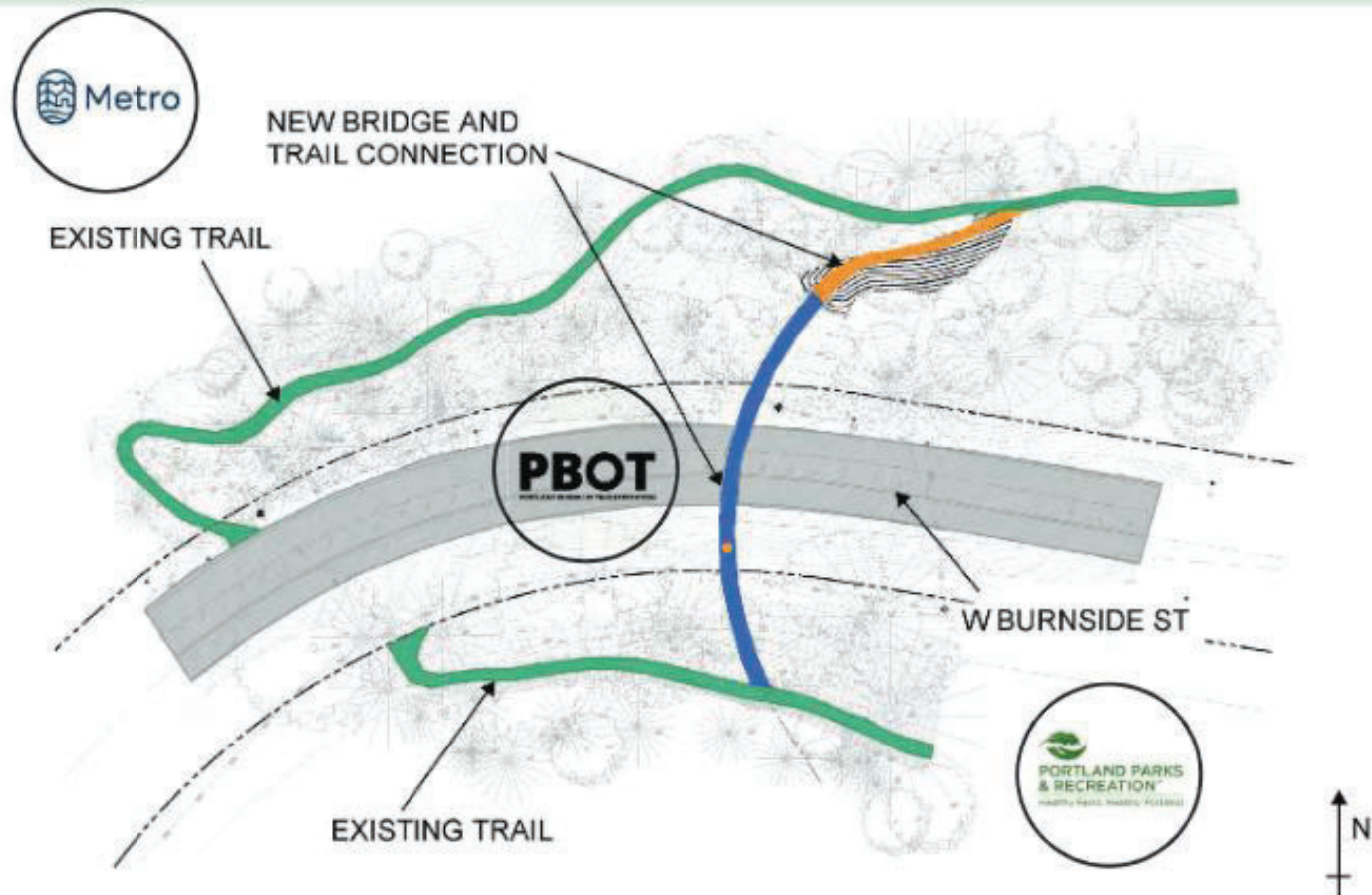
Johnson Creek

Wildwood Trail Bridge

Stevens Pavilion Picnic Shelter

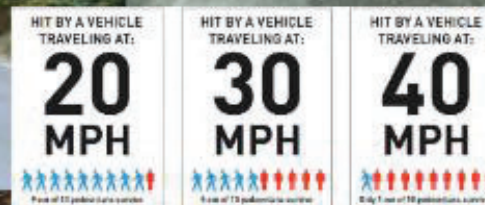
LOCATION

OWNERSHIP/ PUBLIC RIGHT OF WAY



CHALLENGING SITE FACTORS

POSTED SPEED LIMIT 40 MPH ON WEST BURNSIDE



BACKGROUND

CITY OF PORTLAND PLANNING DOCUMENTS

2007 PORTLAND TRANSPORTATION SYSTEM PLAN

2035 UPDATE PORTLAND TRANSPORTATION SYSTEM PLAN (Ongoing)

1998 PORTLAND PEDESTRIAN PLAN

1995 FOREST PARK MANAGEMENT PLAN

2018 WASHINGTON PARK MASTER PLAN

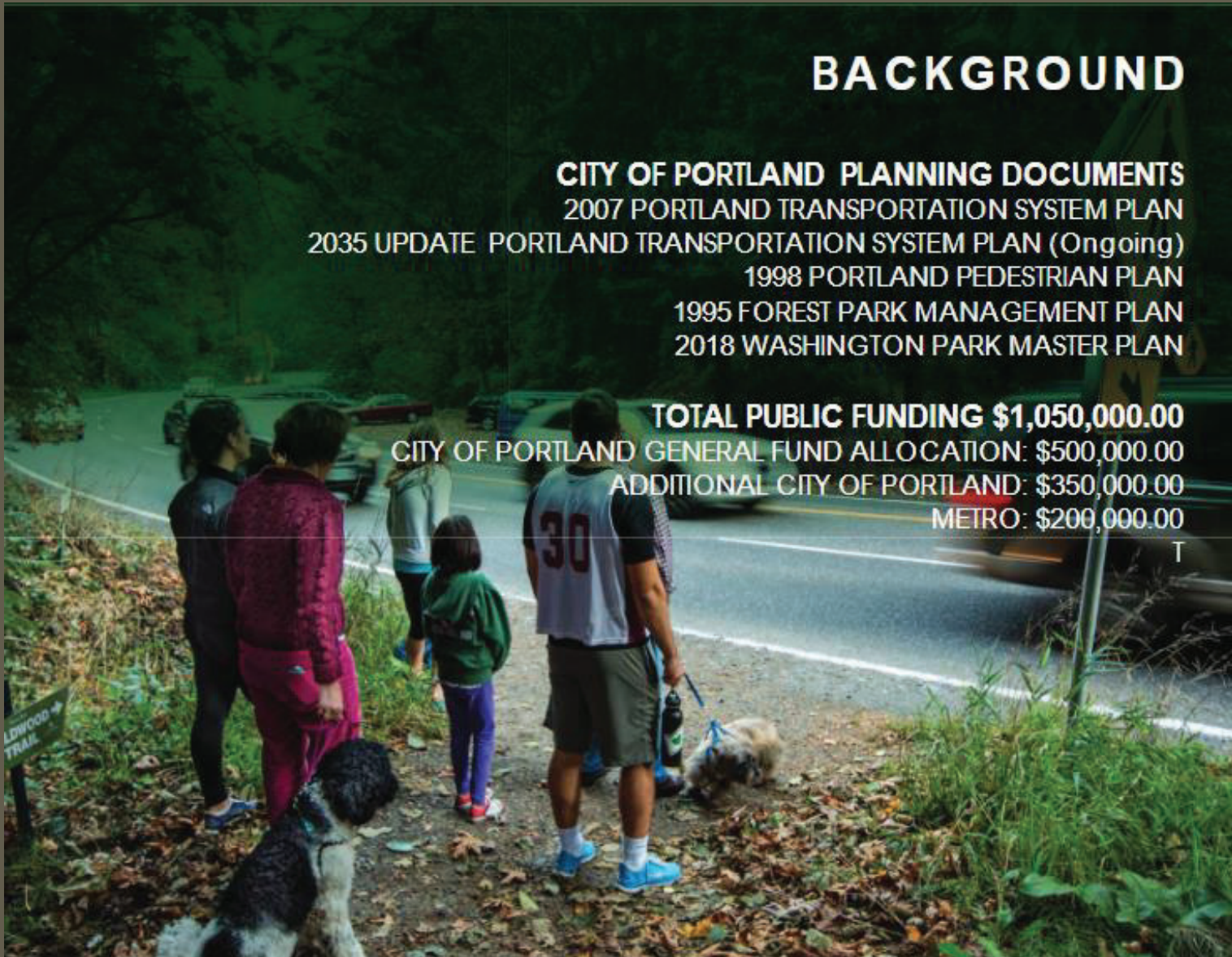
TOTAL PUBLIC FUNDING \$1,050,000.00


CITY OF PORTLAND GENERAL FUND ALLOCATION: \$500,000.00

ADDITIONAL CITY OF PORTLAND: \$350,000.00

METRO: \$200,000.00

T





PUBLIC PRIVATE PARTNERSHIP | Portland Parks Foundation

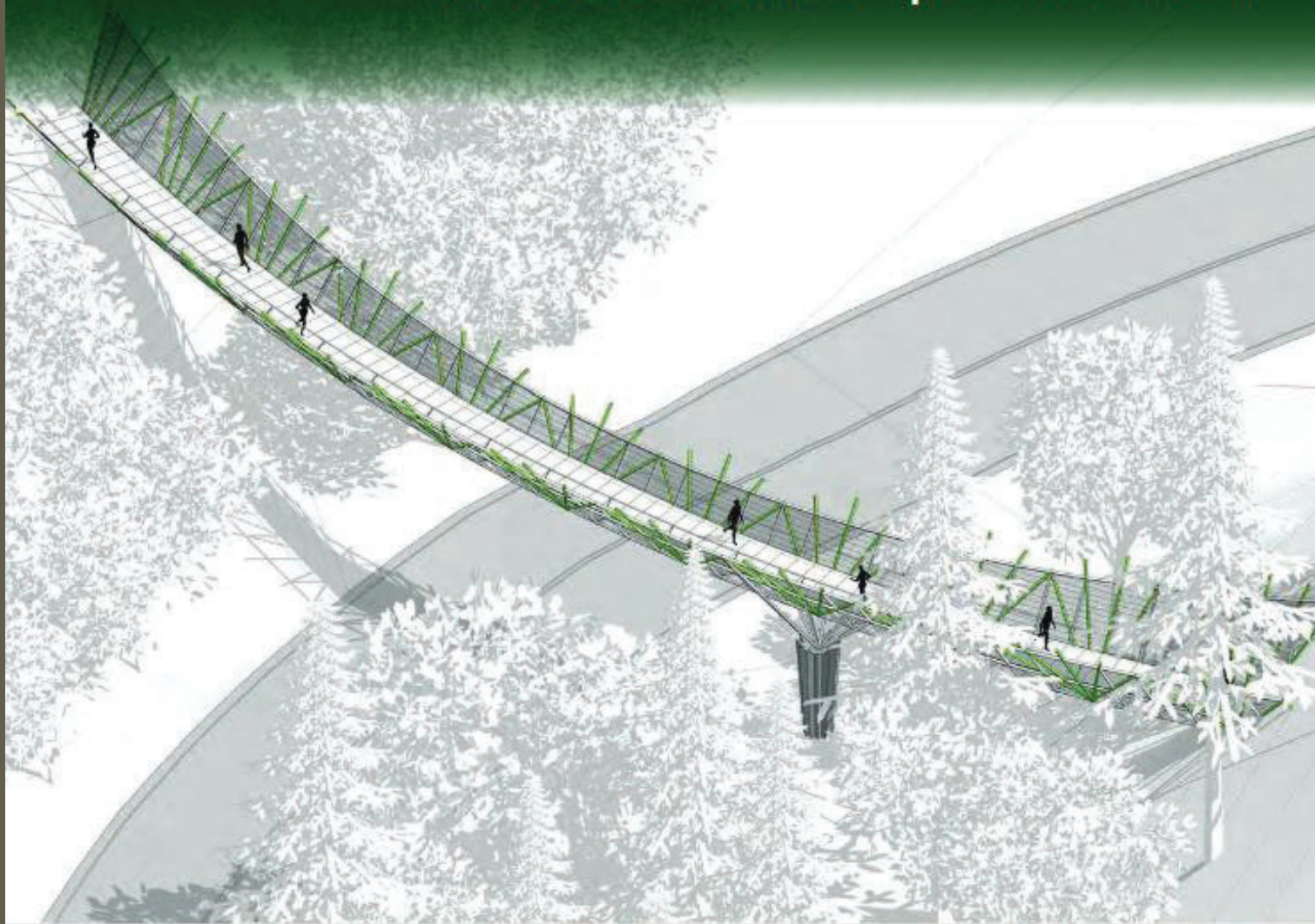
TOTAL PRIVATE FUNDING: \$2,150,000.00
(Includes crowdfunding campaign of \$359,916.00)

ABOUT PORTLAND PARKS FOUNDATION

The Portland Parks Foundation mobilizes financial and popular support to ensure a thriving and accessible parks system for a healthy Portland. PPF accomplishes this mission through delivering leadership, partnership and funding that advances a commitment to excellence, accessibility and good stewardship of our parks.

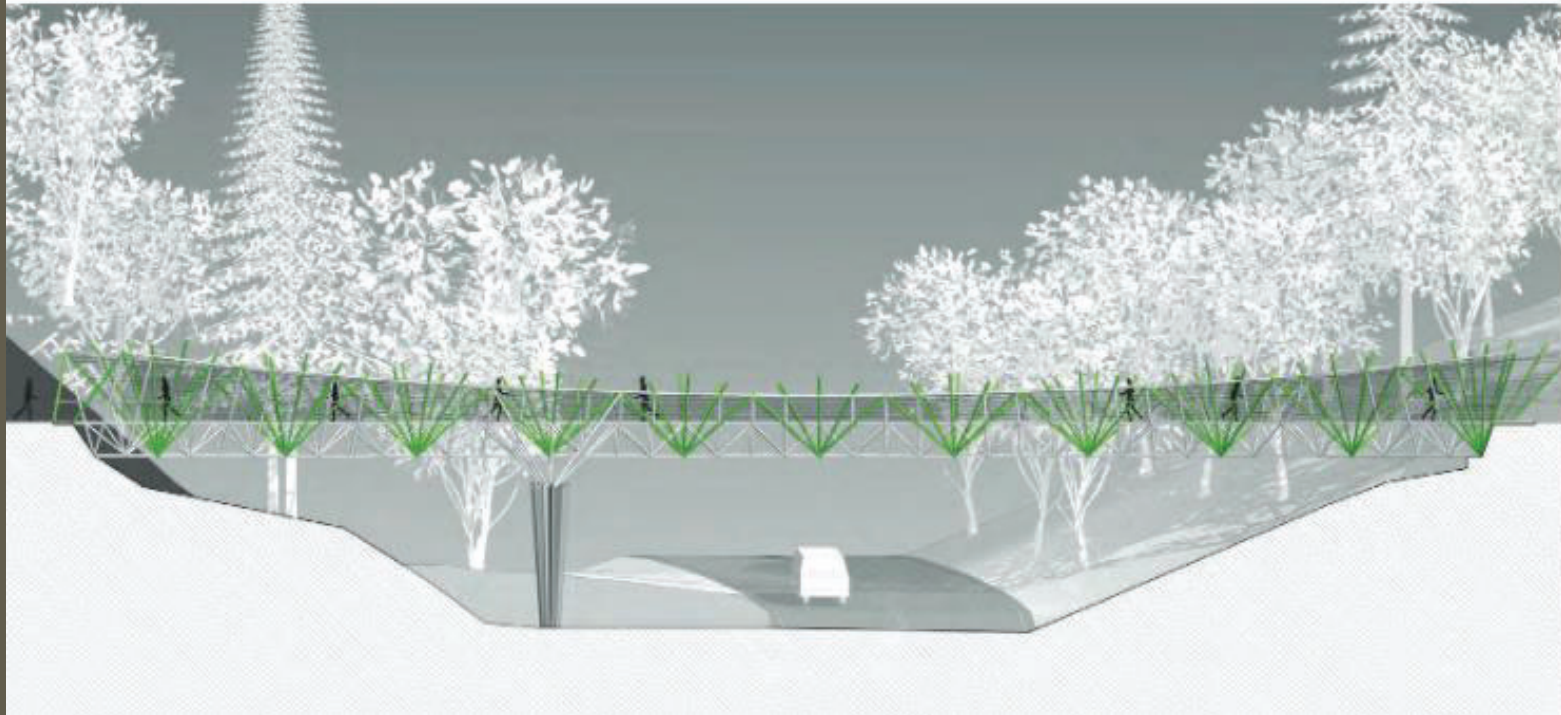
A very special thanks to former Executive Director, Jeff Anderson, and current Executive Director, Randy Gragg, for leading this significant effort for Portland Parks Foundation.

BRIDGE DESIGN | Aerial View

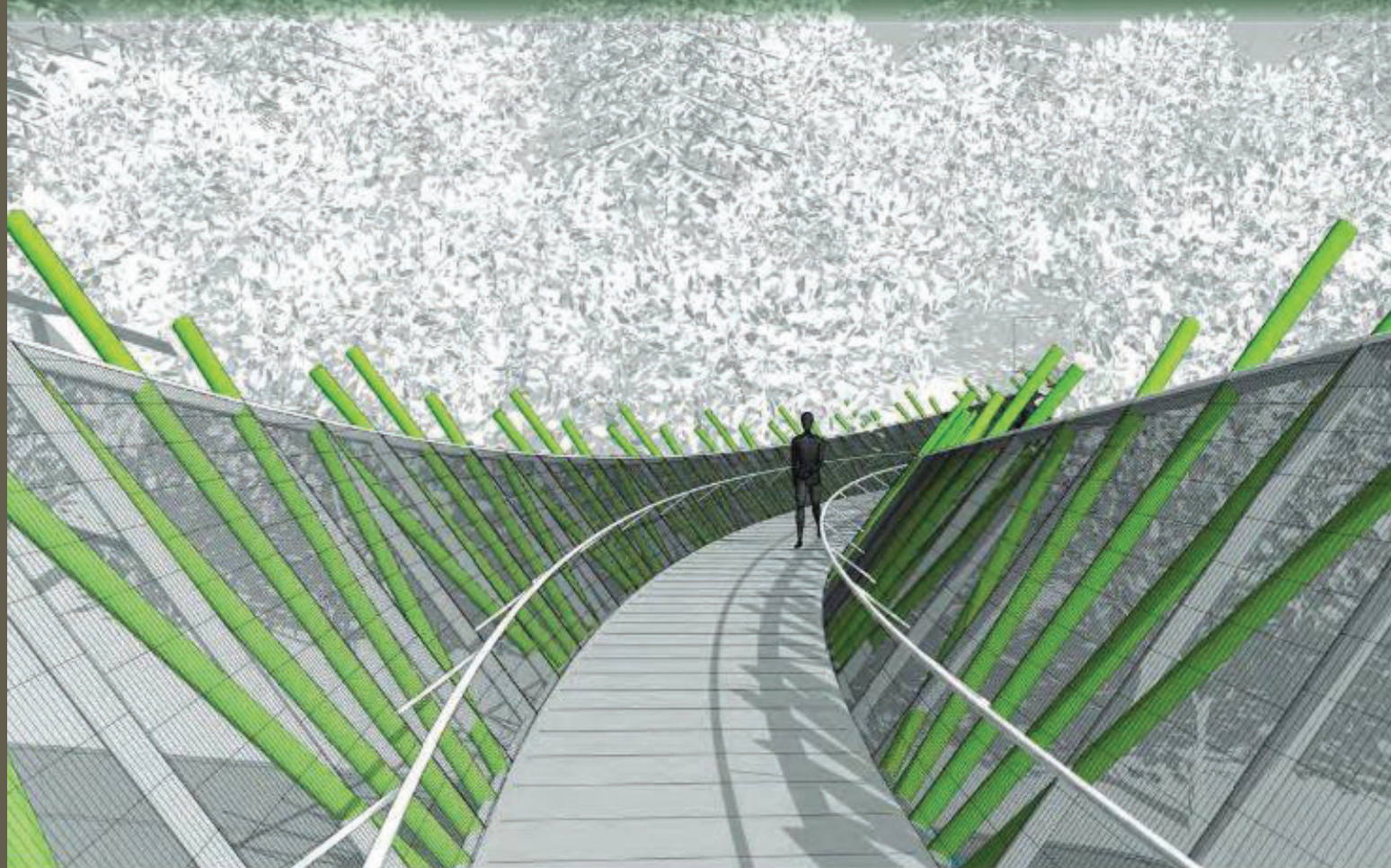




BRIDGE DESIGN | Elevation



BRIDGE DESIGN | Perspective





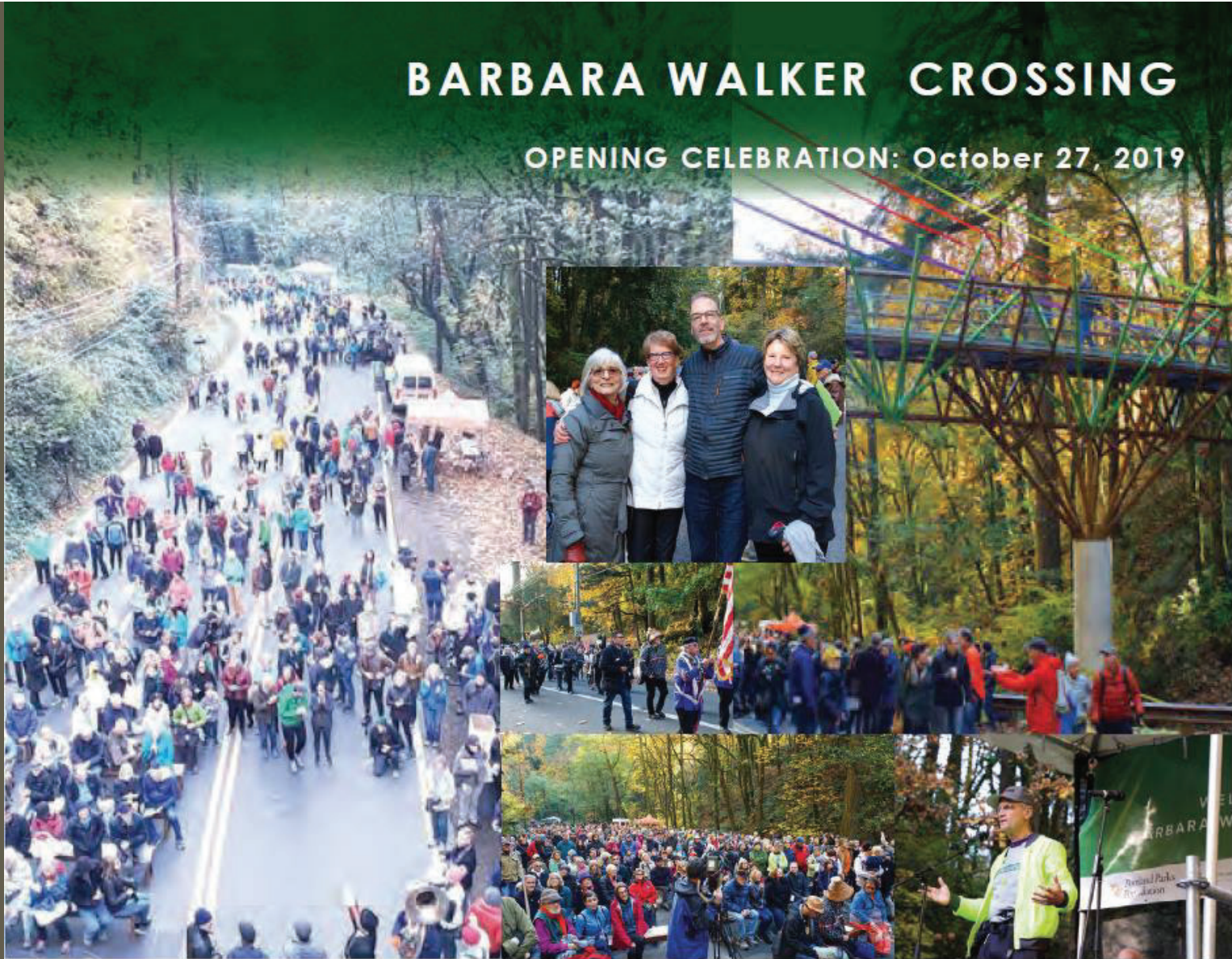
BARBARA WALKER CROSSING

CONSTRUCTION: 03/25/2019 - 10/25/2019



BARBARA WALKER CROSSING

OPENING CELEBRATION: October 27, 2019





CONTACT:

ROBIN CRAIG
CAPITAL PROJECT MANAGER
PORTLAND PARKS & RECREATION
robin.johnsoncraig@portland.oregon.gov
503-823-4182

PLEASE SEE PORTLAND PARKS FOUNDATION
WEBSITE FOR MORE INFORMATION:

[https://www.portlandpf.org/
footbridge-over-burnside](https://www.portlandpf.org/footbridge-over-burnside)



Portland Parks Foundation



Metro

PBOT
PORTLAND BUREAU OF TRANSPORTATION



**PORTLAND PARKS
& RECREATION™**

Healthy Parks, Healthy Portland

NORTH PORTLAND GREENWAY GAPS

Working Together for 15 years since *(before)* 2005!

We Have a Plan!

from the Waud Bluff Trail to N Columbia Blvd Bridge



from the Esplanade to the Columbia • www.npgreenway.org

npGREENWAY envisions a trail system providing access to and along the Willamette River from the Esplanade in Downtown Portland to Cathedral Park under the St. Johns Bridge, then north via the St. Johns Prairie to the confluence of the Willamette and Columbia Rivers at Kelley Point Park.

npGreenway from the Esplanade to the Columbia

npGREENWAY envisions a trail system providing access to and along the Willamette River from the Esplanade in Downtown Portland to Cathedral Park under the St. Johns Bridge, then north via the St. Johns Prairie to the confluence of the Willamette and Columbia Rivers at Kelley Point Park.

Our goal is to link north Portland neighborhoods with the Willamette River for recreation and access to jobs. This expansion of the Willamette Greenway will include a network of trails used for activities such as walking, running, cycling, in-line skating, skateboarding, fishing, boating and wildlife viewing. The North Portland Greenway Trail will connect with the existing Willamette River trail system servicing residents and visitors throughout the region. The Trail is a part of the 40-Mile Loop. Read more at 40mileloop.org.

npGREENWAY will work collaboratively with community stakeholders to realize this goal.

npgreenway.org

AUGUST 2018



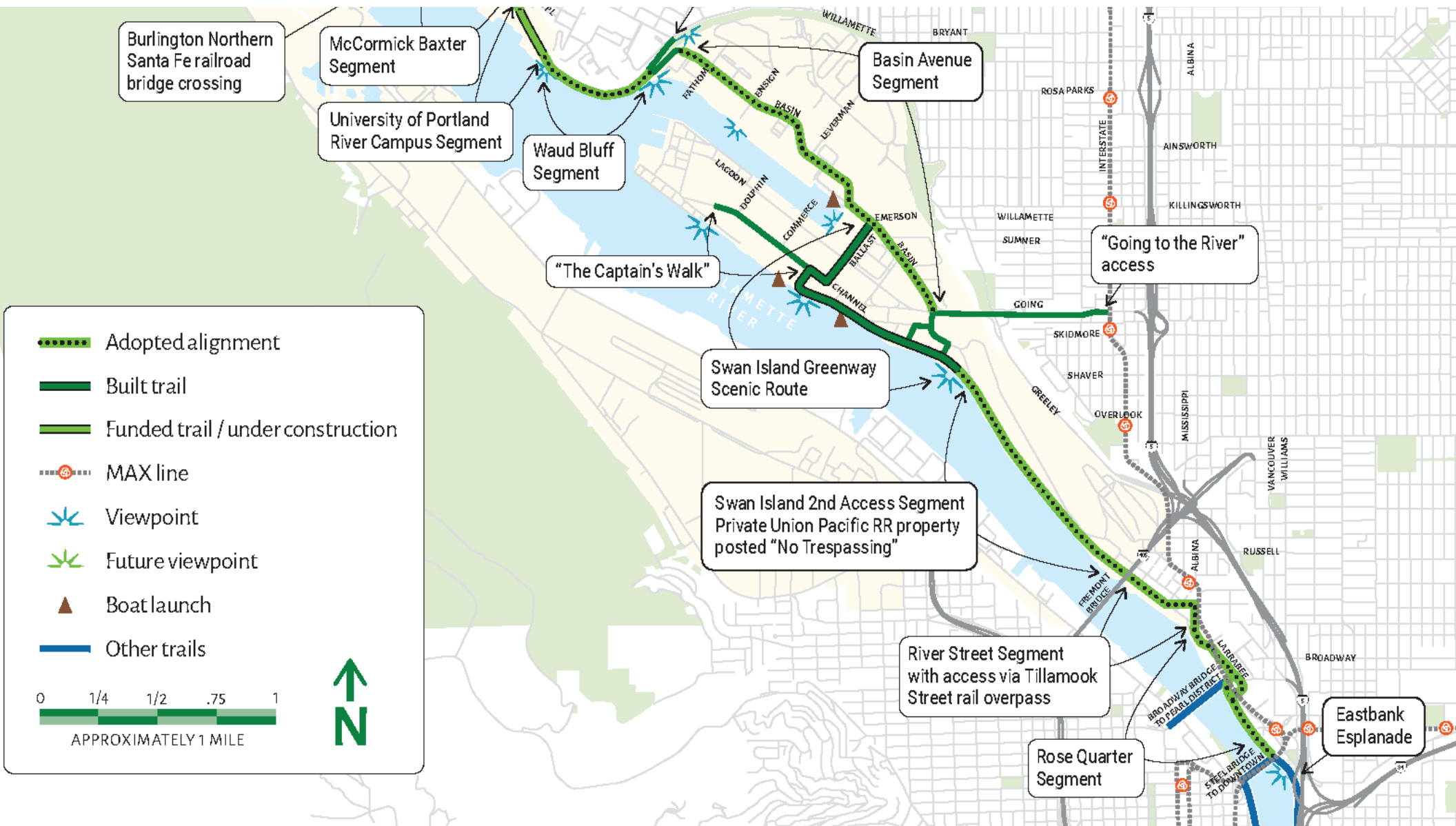


PORTLAND PARKS & RECREATION

Healthy Parks, Healthy Portland

WAUD BLUFF TRAIL GROUNDBREAKING

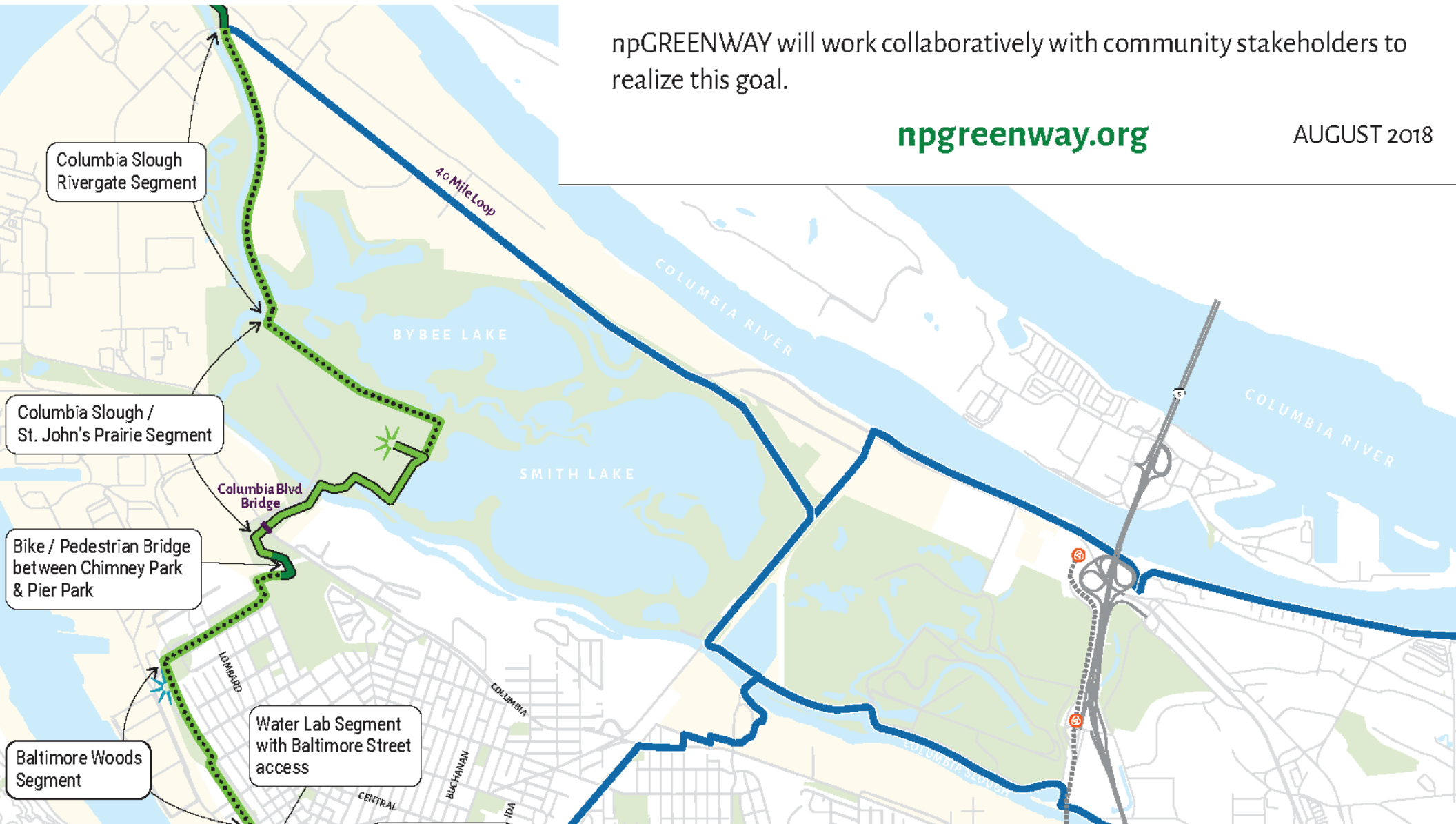
NOVEMBER 15, 2011



npGREENWAY will work collaboratively with community stakeholders to realize this goal.

npgreenway.org

AUGUST 2018





BRIDGE OVER COLUMBIA BLVD.

A CRITICAL LINK IN THE NORTH PORTLAND GREENWAY

- Chimney Park
- Bridge over Columbia Blvd.
- St. Johns Prairie
- Columbia Slough to Kelley Point Park

Willamette Greenway Trail
BRIDGE OVER COLUMBIA BLVD.
Willamette Greenway Sendero
PUENTE SOBRE COLUMBIA BLVD.

oregonmetro.gov/trails

- Existing Pedestrian Trail
- Planned Pedestrian Trail
- Existing Multi-use Trail
- Planned Multi-use Trail
- Existing On-Street Connection
- Planned On-Street Connection
- Conceptual Trail
- Water Trail
- Existing Trail (non-regional)
- Parks and Natural Areas
- MAX Light Rail
- WES Commuter Rail
- Highways
- Major Roads

Regional Trails System Plan (A)

Mapa de senderos de la región

MAY, 2020
MAYO, 2020





Metro

North Portland Greenway
COLUMBIA BLVD. BRIDGE & TRAIL

Greenway Gap Context Map

August 2018



Willamette Greenway Trail
BRIDGE OVER COLUMBIA BLVD.
Willamette Greenway Sendero
PUENTE SOBRE COLUMBIA BLVD.



PORTLAND PARKS & RECREATION
Healthy Parks, Healthy Portland



Metro



**Oregon
Department
of Transportation**

TRAIL CONTEXT MAP (C) Mapa contextual de Senderos

MAY, 2020
MAYO, 2020



Plan Legend

-  Proposed Trees
Arboles propuestos
-  Planting Areas
Zonas de plantación
-  Pedestrian Paving
Pavimento para peatones
-  Vehicular Paving
Pavimento para vehículos
-  Bridge
Puente
-  Tree to be Removed
Arboles que serán quitados

Willamette Greenway Trail
BRIDGE OVER COLUMBIA BLVD.
 Willamette Greenway Sendero
PUENTE SOBRE COLUMBIA BLVD.



PORTLAND PARKS & RECREATION
 Healthy Parks, Healthy Portland



PROJECT EXTENTS (F)

Alcances del proyecto

MAY, 2020
 MAYO, 2020



COLUMBIA SLOUGH TRAIL


- Kelley Point Park to Peninsula Canal (lower slough)
- Peninsula Canal to I-205 (middle slough)
- I-205 to Cross Levee at I 42nd (middle slough)
- Cross Levee to Fairview Lake (upper slough)

Kelley Point Park

Columbia Slough Trail

(as of October, 2020)

Completed Trail		2.28 miles	23.8%
Completed but in Poor Condition		1.45 miles	15.1%
Completed Damaged & Closed		1.00 miles	10.5%
Not Completed		4.84 miles	50.6%
Other Regional Trails			

Areas in the yellow boxes  are trail alignment trouble spots. Currently (2020) one is being worked on by PBOT planning staff.

Bridge Needed Here

Marine Drive Trail

Smith & Bybee Wetlands

Metro is working on connections to and across St Johns Prairie

NP Greenway

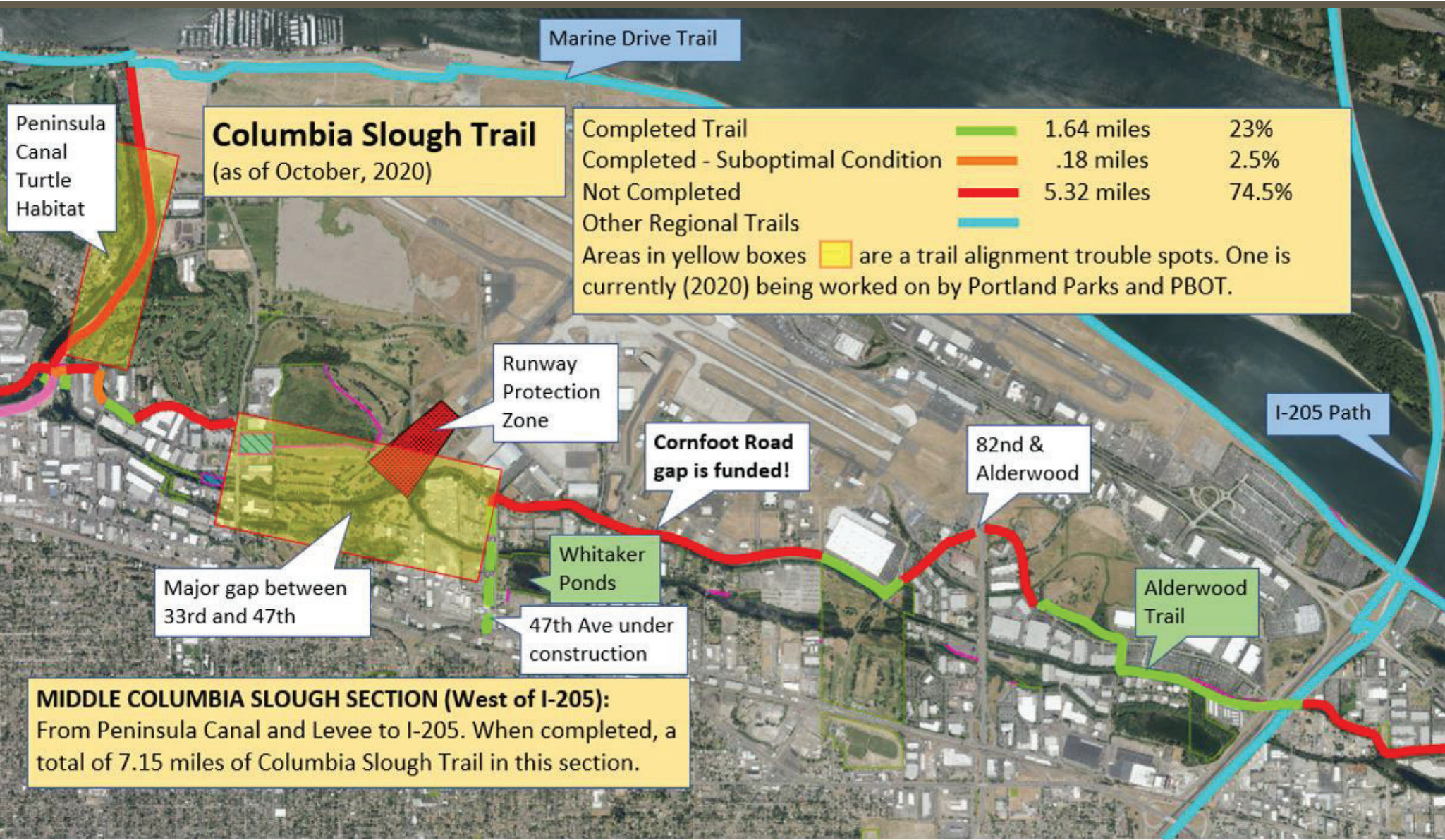
Peninsula Crossing Trail

I-5

PBOT planners are working on MLK to Vancouver

LOWER COLUMBIA SLOUGH SECTION:

From Kelley Point Park and mouth of the Columbia Slough to junction at south end of the Peninsula Canal and Cross Levee. When completed, a total of 9.57 miles of Columbia Slough Trail in this section.





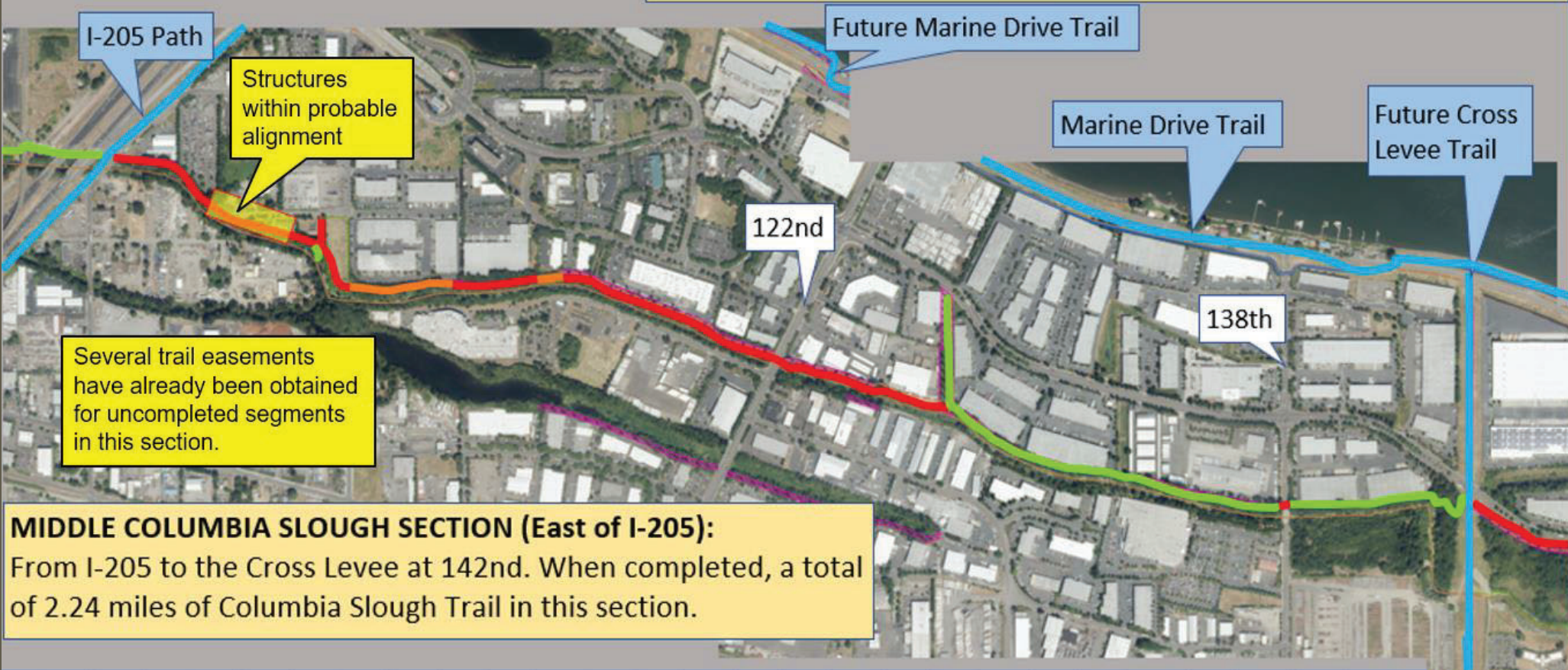
Columbia Slough Trail
(as of October, 2020)

Completed Trail	1.64 miles	23%
Completed - Suboptimal Condition	.18 miles	2.5%
Not Completed	5.32 miles	74.5%
Other Regional Trails		
Areas in yellow boxes are a trail alignment trouble spots. One is currently (2020) being worked on by Portland Parks and PBOT.		

MIDDLE COLUMBIA SLOUGH SECTION (West of I-205):
From Peninsula Canal and Levee to I-205. When completed, a total of 7.15 miles of Columbia Slough Trail in this section.

Columbia Slough Trail
(as of October, 2020)

Completed Trail		.94 miles	42%
Not Completed		1.13 miles	50%
Presumed Completed, but Lost		.17 miles	8%
Other Regional Trails			
Areas in the yellow boxes  are trail alignment trouble spots.			



Columbia Slough Trail
(as of October, 2020)

Completed Trail	2.34 miles	54%
On street sidewalk & bikelanes	.46 miles	11%
Not Completed	1.53 miles	35%
Other Regional Trails		
Areas in the yellow boxes are trail alignment trouble spots.		



COLUMBIA SLOUGH TRAIL SUMMARY

<i>Completed Trail</i>	<i>7.20 miles</i>	<i>31%</i>
<i>Completed, suboptimal</i>	<i>2.09 miles</i>	<i>9%</i>
<i>Completed, but Lost</i>	<i>1.17 miles</i>	<i>5%</i>
<i>Not Completed</i>	<i><u>12.82 miles</u></i>	<i>55%</i>
<i>Total</i>	<i>23.28 miles</i>	

TWO ANNIVERSARIES

Frederick Law Olmsted 200th – 2022

40 Mile Loop 40th – 2023

Olmsted 200

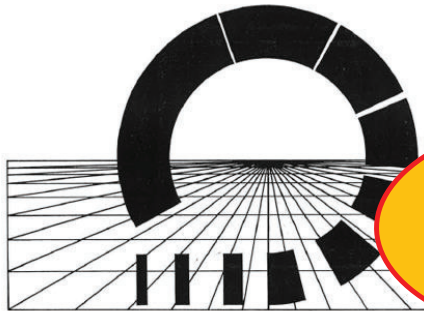
Frederick Law Olmsted was born in 1822. With profound gratitude for his life's work and open space legacy, Portland will join the rest of the nation in celebration of the 200th anniversary of the birth of America's premier landscape architect.

At the request of the Portland Parks Board, Frederick's nephew and stepson John Charles Olmsted came to Portland in 1903 to observe our young city's landscape. John Charles Olmsted's report called for a system of parks and parkways that would preserve and connect the steep forests on the west side of the Willamette River to the volcanic buttes to the east and to the sloughs and marshlands along the Columbia River. The Olmsted report endures as the original vision for the park system that we now enjoy in Portland.

Today's interpretation of the Olmsted report provides the inspiration for completion of the 40 Mile Loop, a system of pedestrian and bike paths connecting urbanized Multnomah County.



Frederick Law Olmsted



40 MILE LOOP MASTER PLAN

MAY 1983

PREPARED FOR: 40 MILE LOOP LAND TRUST
PREPARED BY: DAVID EVANS and ASSOCIATES, INC.

Approaching
40 Years!

Time to Recognize 40 Years of
Work and 40 Years of Progress!



—— Hiking and or Bicycle Trail
—— Bicycle Trail Only



North

40 Mile Loop Trail Route



INSPIRATION

INVITATION FOR NEW MEMBERS

We are actively seeking new board members.

We want our board to represent the
community better.

If you are, or you know someone who
identifies as BIPOC and is interested in this we
would especially like to hear from you!

Please come join us!



THANK YOU!

40mileloop.org

Info@40mileloop.org

PRESENTERS

Name	Organization	Role	Contact
Scott Mizee	40 Mile Loop Land Trust Board Member/Draw2Build	Host, Invitation to join 40ML board	info@40mileloop.org
Bob Akers	40 Mile Loop Land Trust Board Member/Retired	Welcome & Moderator	info@40mileloop.org
Jim Sjulín	40 Mile Loop Land Trust Board Member/Retired PP&R	40 Mile Loop Overview & Columbia Slough Trail	info@40mileloop.org
Walter Valenta	40 Mile Loop Land Trust Board Member/Harbor Properties	Marine Drive Trail Gaps (Kelley Pt., Bridgeton, E. Columbia, Parkrose; Wilkes Gap) & future celebrations	info@40mileloop.org
Mel Huie	Metro	Marine Drive Project, Gresham Gap & Blue Lake Park; North Portland Greenway, Chimney Park to Smith Bybee	mel.huie@oregonmetro.gov
Tom Bouillion	Port of Portland	Marine Drive Project, Fairview & Troutdale Gap	tom.bouillion@portofportland.com
Chris Damgen	City of Troutdale	Troutdale Sandy River Waterfront	chris.damgen@troutdaleoregon.gov
Jay Higgins	City of Gresham	Gresham Fairview Trail Gaps	jay.higgins@greshamoregon.gov
Robert Spurlock	Metro	Troutdale to Springwater	robert.spurlock@oregonmetro.gov
Ken Ackerman	40 Mile Loop Land Trust Board Member/PWB	Springwater, Sellwood Gap, Ross Island S & G gap	info@40mileloop.org
Lou Reynoldson	40 Mile Loop Land Trust Board Member/HHPR	Sellwood Greenway Gaps	info@40mileloop.org
Glen Bolen	40 Mile Loop Land Trust Board Member/ODOT	SW Greenway, gap at Alamo development and Zidell properties	info@40mileloop.org
Deb Scott	40 Mile Loop Land Trust Board Member/HDR	NW Greenway, Gaps at Centennial Mills & Summit Properties	info@40mileloop.org; Re: Centennial Mills: UhlmanS@prosperportland.us
Robin Johnson Craig	Portland Parks & Rereation	Barbara Walker Crossing	robin.johnsoncraig@portlandoregon.gov
Francie Royce	npGreenway	North Portland Greenway	froyce@gmail.com
Randy Gragg	Portland Parks Foundation	200th Anniversary of Frederick Law Olmsted - 2022	rgragg@portlandpf.org